

# WINCHELSEA PARISH MAGAZINE

November 2024



Northern lights *Ann Martini*



## **Rector announces his retirement**

At the end of October the Rector, The Revd Jonathan Meyer announced that he will be retiring at the time of his 70th birthday on 1st February next year.

It is planned that his final service should be on Sunday 2nd February (Candlemas). There is some legal process around confirming dates and further information will appear in the December magazine.

In the meantime Jonathan and Shirley wish it to be known how blessed and privileged they have felt to be able to have lived and ministered here in Winchelsea and will greatly miss friends, the community and the vibrant life of the church.

# CHARITY PUB QUIZ



**Sunday 3rd November 2024**

**Winchelsea New Inn**

**6:30 pm for 7 pm start**

**Teams & Cost**

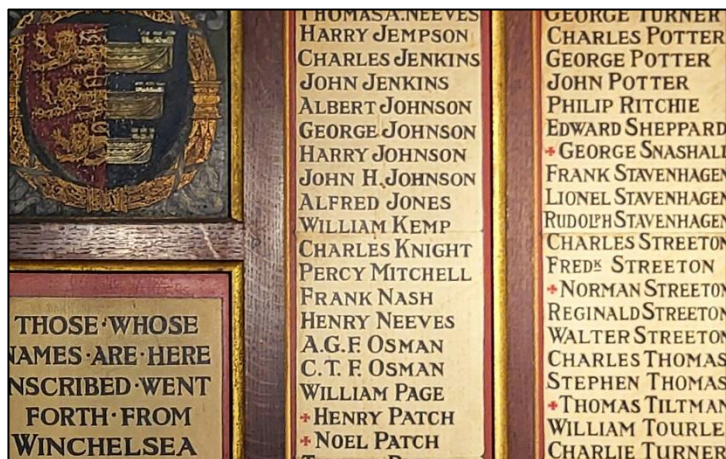
**Max 6 people per table**

**£20 PER TABLE**

**(pay at the New Inn beforehand)**



This will be a General Knowledge Quiz - not a military themed one. There will be a local - Winchelsea, Rye, East Sussex - bias in the questions.



## Poppy Appeal and Remembrance

This year's Poppy Appeal will run until Monday 11th November. Just to confirm that donation tins and trays containing poppies and pins are available at The Little Shop, The New Inn, Winchelsea Lodge, the Farm Kitchen, the Co-op, Sutton's Shop, The Ship Inn/Jamie's Butchers, Winchelsea Sands and the School. Purchases can also be made directly and on-line via [poppyshop.org.uk](http://poppyshop.org.uk).

As ever, donations will be gratefully accepted by the Royal British Legion (RBL) with gift aid being much appreciated. Donations can also be made electronically to the RBL Poppy Appeal, Sort Code 30-11-75, Account Number 01937121 at any time. It would be appreciated if the payment reference SFF24 could be used, for any donations made during the Appeal period, as that will credit the gift to the Winchelsea area. However, this is NOT essential. Donations can also be made by texting POPPY2, POPPY5, or POPPY10 (to donate £2, £5 or £10, for example) to 70545.

A stock of gift aid envelopes is available at the back of the Church for cash or cheques (made payable to RBL Poppy Appeal) and these should be placed in the Black Box in the Church, or in any box at the above locations, on or before 10th November.

We do hope for a good turnout at the New Inn Quiz night on Sunday 3rd November, with proceeds going to the Appeal -

and thanks to Jerry Moss for organising this. You might also see Jerry around, possible at Church Market, with his SumUp machine to enable online donations.

Finally, if you have any difficulty in getting hold of any remembrance material you need, in making a donation, or have any questions about this year's appeal, please call John Rodley on 01797 223458.

---

## Remembrance Ceremonies

On Remembrance Sunday, 10th November, the Mayor will lead a wreath laying ceremony at the War Memorial at 11am. Others who wish to lay wreaths are welcome to do so, but this is very much the decision of individuals. Following the laying of wreaths, there will be a Service of Remembrance in the Church. By kind permission of the PCC, donations made at that service will go to the RBL Poppy Appeal.

It is intended that the Rector will lead a short Act of Remembrance at the War Memorial at 11am on Monday 11th November, Armistice Day.



*Ian Rowlands*



## **John Wesley's Chapel**

On Saturday 2nd November the Chapel will be hosting a Service of Remembrance. The Revd Crawford Logan, minister of several Methodist Churches in the Bexhill and Hastings area, will be leading the service, which will include a roll call of Winchelsea people who lost their lives in the world wars in the last century. The service will start at 11am, but will be preceded by tea and coffee from 10.30 for those who come early.

The last event at the Chapel for the year will be the Christmas Celebration Service on Saturday 14th December, again with refreshments before the service which will start at 11 o'clock. We are delighted to welcome The Revd Tricia Williams, recently retired Methodist minister, to lead our Christmas celebrations.

*Mike Lambourne*





**SATURDAY  
16TH  
NOVEMBER**  
10.30AM TO 3PM



# **WINCHELSEA CHRISTMAS FAIR**

**GRAND RAFFLE, TOMBOLA,  
REFRESHMENTS**

**LOCAL ARTISANS - JEWELLERY, FINE  
ART, PRINTS, CARDS, BASKETS,  
TEXTILES, CANDLES, CERAMICS,  
WINE, WOODTURNERY, CAKES AND  
PRESERVES, WALKING STICKS,  
CHOCOLATE, CHEESES, DELI AND  
MORE**



**ENTRY £1, UNDER  
16'S FREE**

**WINCHELSEA NEW HALL  
TN36 4AA**

**REGISTERED CHARITY NO. 235174**

# Christmas Bake Off

## A call for home-made Mince Pies from Winchelsea's residents

This year the Winchelsea Christmas Fair will be held on Saturday 16th November, at the New Hall. We have lots of new stallholders attending, as well as some familiar faces, so be sure to come and start your Christmas shopping early on the 16th and support local craftspeople, artists and artisan food producers.

Stallholders this year will be selling their baskets, jewellery, candles, woodturnery and walking sticks, ceramics, art prints and cards, textiles and embroidery as well as bulbs and knitted items. For sale on the food front there will be wine, chocolate, preserves, cakes and artisan cheese - all locally produced. Additionally, there will be refreshments, an adult and a children's Tombola, and another wonderful Grand Raffle. All proceeds from the Raffle will be split 50/50 between the New Hall and the Rye Food Bank.

The Tombolas will focus on 'Christmas Treats'. If you can help with a small donation that would be very much appreciated; wine, chocolates, sweets and anything just a bit Christmassy or something that would make a lovely Christmas gift would be great.

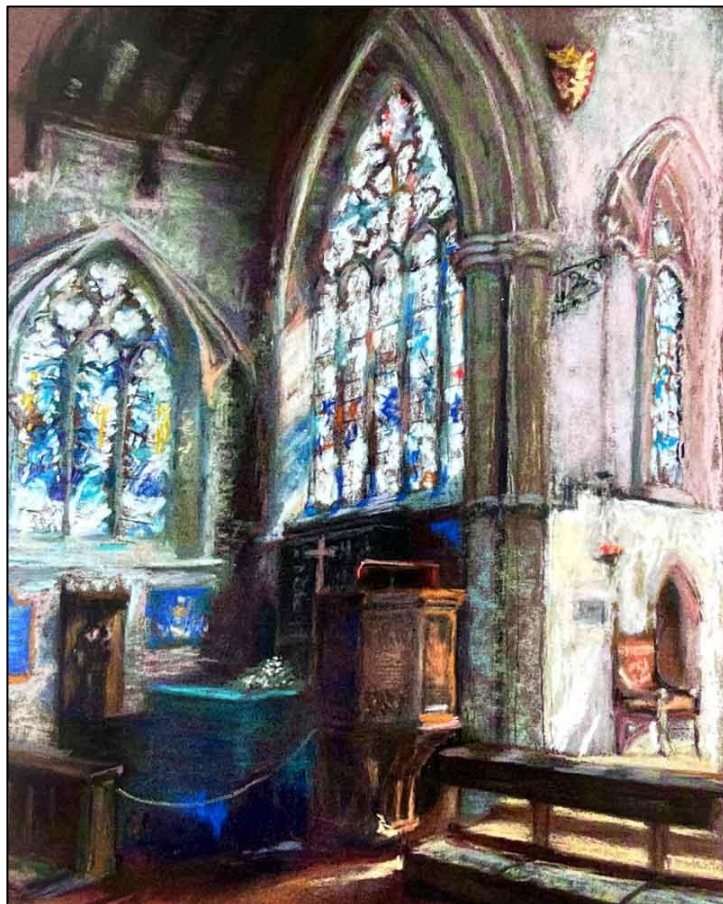
Up and until 13th November John and Sue McGeown at 1 Hiham Green are happy to collect any donations - [johnhmcgeown@gmail.com](mailto:johnhmcgeown@gmail.com) 07796 272720  
[suejmcgeown@gmail.com](mailto:suejmcgeown@gmail.com) 07766 915111.  
Thereafter, please drop off all donations at Wren Cottage.

Finally, this year we are also calling on all the budding (or highly experienced) pastry chefs of Winchelsea. We specifically would like donations of home-made mince pies and these will be sold at the Fair for charity. All donated mince pies are to be conveyed to Wren Cottage on Friday 15th November.

We look forward to seeing you all.

*The Winchelsea Christmas Fair Organising Committee*





*Cheryl Fraser-Sampson*

## **St Thomas's Light and Sound Appeal**

*The Rector writes:* I would very much like to encourage anyone who has an interest in our wonderful church at the centre of the community to come along and hear about the proposals for new lighting and sound equipment on Friday 15th November at 6pm.

The Church remains the centre of Christian liturgy and worship within this community but it is also a building beloved by many others, whether Christians or people of another faith or of no faith. It is often at the centre of events involving the Corporation and the venue for the very distinguished series of concerts organised by Winchelsea

Arts as well as the Rye Arts Festival and other occasional performers.

We are very fortunate to have a lighting expert, Graham Large, living in the town and he has helped enormously with the project. There will be time to hear about the project in more detail and ask questions on 15th November but I wanted to outline what I see some of the numerous benefits.

The present lighting is very expensive to run and, in world focused on reducing our carbon footprint, the new scheme will not only save us money but also help us become a 'greener' church. The sodium lights are now discontinued and cannot be replaced.

Many people have commented on the way in which our church has an atmosphere and aura of God's presence, a place that allows us to explore our spirituality. Better and more sympathetic lighting can enhance worship. Not only does this aid our experience of liturgy it will be make the space more atmospheric for concerts.

The new sound system will make the church more accessible to those struggling with hearing and allow us to live-stream services to anywhere in the world, now that we have Wi-Fi. It is not uncommon now for weddings and funerals to be live-streamed and it would enable us to charge modest amounts for this service again enhancing our capacity to continue to survive and meet our financial responsibilities.

There are many other reasons why we think this is an essential project and they will be explained at the launch of our appeal. This will be a challenging and expensive exercise and I encourage you to come to hear more about it and to ask questions.

# J S Bach and his contemporaries

## a recital for mezzo-soprano oboe and trumpet



SATURDAY 16th NOVEMBER 2024 6.00pm—7.30pm  
ST THOMAS' CHURCH WINCHELSEA TN36 4EB

**ENTRY £10 — on the door**  
**all ticket proceeds to be donated to**  
**RAISE YOUR VOICE**  
cash bar - for church funds

**Susanna Spicer, mezzo-soprano**  
**Crispian Steele-Perkins, trumpet**  
**Justin Oglethorpe, piano / organ**  
**Simon Edge-Partington, oboe / oboe d'amore**

### PROGRAMME

a selection of arias from the Bach cantatas  
interwoven with trumpet music by  
contemporary composers

BACH—CHARPENTIER—HANDEL—PURCELL  
SCARLATTI—STANLEY—STRADELLA

IN  
AID  
OF



Dementia singing project

[www.raiseyourvoice.com](http://www.raiseyourvoice.com)

In case of cancellation check up-to-date information  
[www.facebook.com/obligatory](https://www.facebook.com/obligatory)



## **Reflections from the Rectory**

I sit down to write this on a rather gloomy October day. It is one of my favourite times of year, whether the weather is gloomy or not. The early part of the month is always busy with Harvest Festivals. It is only a few weeks from the successful Harvest Supper and Ceilidh held in the New Hall, which proved to be an excellent community event put on by the church.

The School and parents came to their Harvest Festival in Church and we celebrated communion with bread baked with the class ambassadors. Un-consecrated loaves were saved and shared later by the pupils. There was thoughtful presentation by the children and they added to their own special prayers.

The collection and offerings of food and produce was for Rye Foodbank. I am pleased to say that all the children in school understand the need to support those who struggle as winter approaches.

In the middle of last month Winchelsea Choir visited Icklesham to celebrate Harvest Festival. It is good to remember that we are a joint benefice; although each church

has its own individual character we share services from time to time as part of a larger Christian community.

Golden and wet days fall on all our churches and herald the autumn season. You will read this in the 11th month of the year, when the days have begun to shorten, the leaves to fall, and there is a chill in the air.

November is a time to remember. At the beginning of the month we will have a Service of Thanksgiving for the Departed in Winchelsea.

On Remembrance Sunday we will remember the names of those from Winchelsea, Icklesham and Pett who fell in war. These gatherings bring the commemoration to the whole community.

It is no accident that communion and community share the same root. In Church we share communion, bound together by the body of Christ and in the community we gather together to share our humanity with or without bread and wine. As we gather we are reminded that these subtle bonds can be rooted in, and reflected by our churches.

*Jonathan*

## **Bible Reading at the New Inn**

Our informal Bible reading will continue on 7th November - the first Thursday - at 6pm in the New Inn Winchelsea. It is a very relaxed gathering and no prior knowledge is required. We always end around 7pm. There has been good attendance – look at it as Book Club with a difference. This time we will be looking at the closing chapters of the Gospel according to St John. All welcome. Contact Jonathan for more details or with any questions [revdjonathan@btinternet.com](mailto:revdjonathan@btinternet.com) 01797 226254.



## **Service of Thanksgiving for the Departed**

**St Thomas's, Sunday 3rd November at 4pm**

As usual there will be a service to which all those who have suffered a bereavement within the Benefice or in the Parish of Pett will be invited. Anyone is welcome and if you would like the name of a loved one to be read out you are welcome. It will be an opportunity to gather for a short service and light a candle.

Bereavement is a very personal experience but it is good to remember that there are many around us dealing with bereavement in their own ways.

We will not be holding a Lights of Love service this year but the collection will be for St Michael's Hospice in St Leonards.

---

## **Sheila Horobin**

Shelia died on 3rd October and her funeral will take place at St Thomas's on Thursday 21st November at 2pm.  
Our sympathies go to David, Richard and Jonathan.



Winchelsea  
Garden Society

# Mig Kimpton

## Preparing for a Floral Christmas

The creative designer  
returns to show us how to  
make beautiful Christmas  
decorations using plants

The New Hall Winchelsea  
2:30 pm Saturday  
9 November 2024

Admission **£5** including a  
raffle ticket

Floral arrangements will be  
awarded to 3 winning raffle  
ticket holders





## **Autumn Churchyard Working Party and Bulb Planting**

Please come along on Saturday 9th November between 10am and 12 noon if you would like to help us with some tidying up, weeding, pruning or planting. There are lots of jobs to do. Refreshments provided.

Please let me know if you are able to help on

[shirleymeyer@btinternet.com](mailto:shirleymeyer@btinternet.com)

07938 487249



## **Food Security**

On Saturday 12th October, Winchelsea Conservation Society, noting the changes in farmland management around the town, invited Professor Allan Buckwell (Emeritus Professor of Agricultural Economics, Imperial College) to talk to us. His title was 'How securely and well fed are we really?'

Professor Buckwell has worked on the Common Agricultural Policy, with the Institute for European Environmental Policy and with RISE, an European organisation involved with promoting sustainable agriculture.

He gave us a thorough, informed overview of the state of food security in the UK, Europe and the world. He said that the UK, according to DEFRA, was broadly food secure and the population better and more securely fed than any previous generation partly due to our more sophisticated capacity to produce and preserve food.

He then outlined the threats to food security - from our wasteful food systems to pollution; the impact of bad weather, changing climates and pests on crop production ; and global food supply shocks such as Covid and wars which affect supply chain resilience.

However, he also concluded that worldwide, the food system was unsustainable. European and UK farmers claim their businesses are economically unsustainable and state that they have a weak bargaining position in food supply chains, are undercut by imports and stifled by regulation.

In the UK, he said, farmers have had to diversify into hospitality, recreation, solar farming, etc. There was a need in the UK, Professor Buckwell believed, for higher food prices to sustain farming, a decrease in protein ( livestock ) consumption and far less waste of food.

He concluded that solutions included paying farmers for environmental services (biodiversity), regenerative or organic farming, precision and vertical farming (hydroponics) and more emphasis on in vitro cultured protein production in order to feed both the UK and rest of the world.

Professor Buckwell provided a thought-provoking survey of our rather complacent attitudes to food production which, according to the report by Henry Dimbleby and Michael Gove, may be making us and the planet sick.

*June Grindley*



WINCHELSEA FILM NIGHT

In conjunction with Winchelsea New Hall

MAGGIE SMITH

ACADEMY AWARD FOR BEST ACTRESS

THE PRIME OF  
MISS JEAN BRODIE

BY MURIEL SPARK

IN MEMORY AND IN CELEBRATION OF A GREAT PERFORMANCE FROM A GREAT ACTRESS, DAME MAGGIE SMITH



**SATURDAY 23rd NOVEMBER 6.30 for 7.30 SCREENING**  
**Admission Free**  
**Refreshments, Pay Bar.**  
**Come early, enjoy a drink or two.**

Note that this is a change from the date  
previously advertised





## Update from the Mayor

Over the past couple of months there has been a lot of Corporation activity. To avoid taking up all the space in the parish magazine, the following is an update of current and planned activities.

**Winchelsea Court Hall and Gates** As reported in last month's parish magazine, work was due to commence on the West Gable Wall of the Court Hall. This project is due to complete in the next few days, and the repairs and restoration work have gone well. We anticipate that the scaffolding will be taken down early November. Once the site has been cleared, consulting with neighbours, we will be looking at the best way to restore the area of ground, and at the same time reveal more (not all) of the cellar entrance

We are still pushing forward with plans to refurbish the Court Hall toilet and renovate the Victorian main entrance doors and associated external stonework, subject to permissions. It is hoped these projects will commence early 2025, with the toilet being tackled first.

**The Three Town Gates** The plans to clear vegetation from all three of the gates were delayed during October. I am confident this will be achieved during November, subject to contractor availability.



**The Lost Cinque Ports Sign** As reported last month; what a find! I have now managed to have the sign reinstated to its rightful place, on the A259, opposite the old Bridge Inn, as you approach Winchelsea from Rye. It is now clearly visible and serves as a reminder to people of our historic heritage. Many thanks to John Spencer for discovering the sign and East Sussex Council for installing the sign, in a very short timescale.

Whilst in conversation with East Sussex Council the issue of the unsafe railings at the Lookout was again reported, and I know Icklesham Parish Council have further reported the matter.



**Visitor Information Boards** Most of you will be aware that there are four information boards in and around our town. The viewing locations being the Beacon, North Street, the Look Out and Chapel Field. The original signs were installed approximately twenty years ago, and over the years had deteriorated in many ways, including fading.

I am pleased to report that two of the information signs have now been replaced at the Beacon and North Street and are so vibrant. The plan is to replace the two remaining signs during 2025. Many thanks to Icklesham Parish Council for making this happen.



### **Confederation of the Cinque Ports**

The installation of our new Lord Warden, Admiral Sir George Zambellas, took place at Dover's Royal Military School on Tuesday 29th October, and a number of past and present Winchelsea Corporation members attended this historic and special event. The Lord Warden is planning to visit most of the towns of the Confederation, and I am delighted to announce that he, and his wife Lady Zambellas, will be visiting Winchelsea on Monday morning, 4th November.

### **Winchelsea School**

Debbie and I met up with the newly appointed Head, Dale Saxby and were given a tour of the school. The school is a wonderful learning environment. We are now looking at a number of different ways at how we can support the school including future planned student projects.

### **Friends of the Ancient Monuments and Museum**

More recently we both attended *'The Fall of the House of Usher'*. This event was amazing. It was as though we were attending a very private and personal West End production in a fantastic setting. So much hard work and preparation went in to stage this wonderful event, so many talented and gifted people. Thank you. FOAM's support is invaluable to the Corporation, and we are so grateful for everything they do.

**Remembrance Sunday** Members of the Corporation will be attending the service in St Thomas Church.

**Murder Mystery** Due to unexpected circumstances the planned 'Murder Mystery' has been rescheduled for early 2025, full details will be announced soon.

**Cinque Ports Film** If you missed the exclusive showing of the edited version of the David Starkey film *'The Cinque Ports'*, a further showing will take place in the Lower Court Hall at 2pm on Saturday 23rd November.

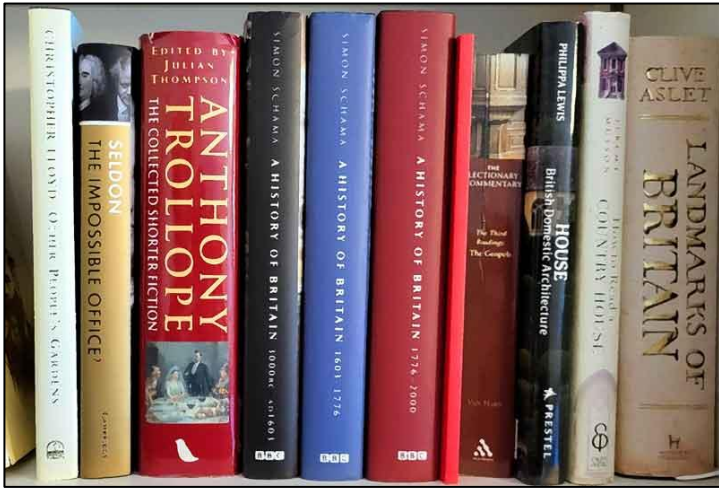
I will also provide an informal overview of the Court Hall, Winchelsea Corporation, our relationship with the Cinque Ports, and of course answer questions. Limited places so please contact me to reserve your seats. Entry free but donations welcome on the day.

**Demelza.** The final charity pub quiz of 2024 takes place Sunday 8th December at 7pm in the New Inn, all proceeds going to Demelza children's charity.

On Saturday 14th December, in conjunction with 'Christmas Windows' a community gathering in the New Inn at 7pm with carol singers, and of course the presentation of all funds raised to members of the Demelza Nursing Team. All are welcome.

All my thanks for all your support and the hard working team of the Corporation.

*Peter Cosstick, Mayor*



## Church Bookstall

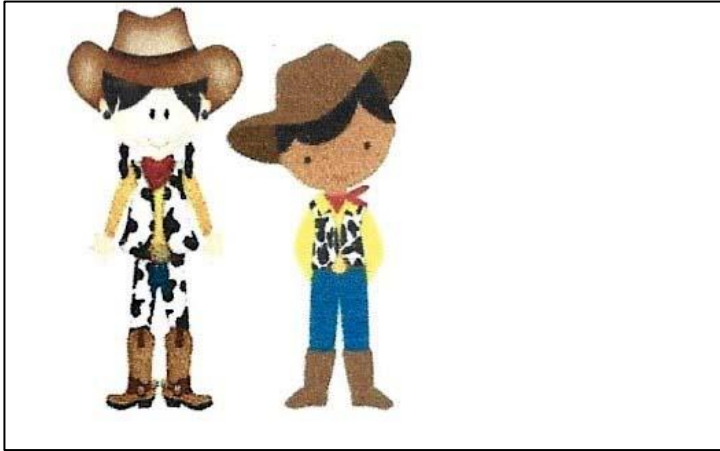
*Howard Norton writes:* About ten years ago I started the bookstall. At first, it only operated at the monthly church market but latterly the books have been left on display for visitors to buy during the week.

Sales have generated a useful trickle of income - probably in the region of £100 a month - though since the contactless machine was installed it's almost impossible to know exactly how much. All we know is that the books disappear steadily. A display of good-quality books is also an attraction to visitors who like to browse.

At the moment we need to refresh our stock so, if you have books you are prepared to part with, please let me know and I will come and collect them. They will be priced realistically; we are not in the business of giving away good books. The Church deserves a fair return for your generous donations.

We don't have much storage space so we only want hardback non-fiction or good quality paperbacks. We are not trying to compete with the charity shops. Occasionally people have dumped large plastic bags in the box pew brimming with material we just can't sell. Please don't do that!

[howard@ryeview.net](mailto:howard@ryeview.net) 01797 226524



## **Winchelsea Beach in November**

Tuesday 5th November: Mothers Prayers at 10am at Dabchick Cottage, Morlais Place.

Wednesday 6th November: First Wednesday Coffee Morning in Winchelsea Beach Community Hall from 10 until 12. Everyone welcome.

Saturday 9th November: Barn Dance in the Community Hall with the Catsfield Steamers, 7 until 10pm. Tickets £15 each to include a sausage and mash supper are available from Suttons Fish Shop or from Mary Parker 07927 7107678. Bring your own drinks.

Sunday 24th November: Christmas Craft Fayre in the Community Hall from 10 am to 3pm. Refreshments including homemade cakes available. Free entry.

Friday 29th November: Fellowship Lunch at the Community Hall. 12.30 for 1pm. Please contact Mary Parker if you plan to come. 07927 107678



## **The Life and Loves of John Betjeman**

In a change to the published programme we welcome Peter Southgate who will be speaking about the life and work of John Betjeman. Peter has kindly agreed to stand in at short notice. He and his wife Gillian have lived in Kent for the past forty years and have been involved in Winchelsea for the last fifteen years.

Peter is an admirer of the poetry and journalism of Sir John Betjeman and has spoken about these to several literary groups. He has also written books on life in Essex and Suffolk in the twentieth century.

The meeting takes place at the Court Hall on Friday 15th November at 7pm for 7.30. Free for members, £5 for non-members





## **Fairlight at Risk**

This is the subject of November's Second Wednesday talk by Haydon Luke.

Whether as a place to live or as a venue for holidays and recreation, nearby Fairlight has long been renowned for the beauty of its coast and countryside. Few who visit today cannot but be struck by the glory of the landscape, the cliffs and glens of the Country Park, the spectacular panoramas of the Weald and the view over Rye Bay.

But it all might have been very different. At various times in the past the Fairlight landscape has come under threat from industry, developers old and new, the military and most recently from the sea itself.

The story of how Fairlight came to survive those dangers is a fascinating tale of resilience, community endeavour and, it has to be said, luck. Join Haydon Luke in a trip into the past and see Fairlight in a new light.

2.30pm on 13th November at the New Hall  
Visitors £5, Homemade tea £2

[2ndWeds@gmail.com](mailto:2ndWeds@gmail.com)



## Steam on the Marshlink

*John Spencer writes:* I spotted, as you might expect, that the Railway Touring Company have a steam special coming through Winchelsea station on Monday 11th November - Armistice Day.

It should reach Rye by 11.10am so, if admirers of steam were perhaps on the platform at Winchelsea station by, say 11am or before, they should get some excellent photos. Then again, maybe it will be late or it may snow; who knows. There will be a diesel at the rear of the train.

The train from Victoria comes via Hastings to stop in Rye and turn round in Canterbury. On the way back it is primarily hauled by a diesel which will be at the front.



## **Winchelsea Fete 2025**

On behalf of Winchelsea Cricket Club, may I say thank you to all those who've helped and supported the Winchelsea Fete and Fun Dog show over the past couple of years. We hope the event has given pleasure and know that it's been a valuable source of revenue for local societies.

After some lengthy deliberation, the Club has decided to step aside from organising this event.

However, we're delighted to announce that St Thomas' School PTA have kindly agreed to take up the mantle, and will be organising the 2025 fete which will be on Saturday 9th August. Watch this space for details of how to get in touch with them about this.

We wish the PTA every success and look forward to what I'm sure will be a great day.

*Alan Crouch*  
*Chairman Winchelsea Cricket Club*



## **Archaeology and History**

WAS has two talks coming up. Both will be held in the New Hall. Coffee from 11am. Talks start at 11.15am

**Saturday 9th November** a talk on ‘Developments in warfare with evidence from the vicinity of Winchelsea’ will be followed at 12.15pm by a walk to visit sites in Winchelsea linked to World War 2. Presented by Jeremy Moss and Andrew Scott, the talk will focus on the Royal Military Canal and Martello Towers, WW2 developments in electronics, logistics and military organisation.

**Saturday 14th December** a talk will be given by Andrew Scott: ‘Does the Roman Road identified in Icklesham in 1982 extend eastwards?’ The WAS Walk on 10th August viewed the Roman bloomery site at Icklesham, and the place where excavations by the Hastings and Area Archaeological Research Group (HAARG) in 1981/82 discovered a considerable Roman Road, comparable with the width of the present A259 road.

The talk will focus on LIDAR data used to identify the presence of Roman roads in Devon and Cornwall, will be

shown to demonstrate the value of such data and what we might be looking for. Other research data and theories, that might support a Roman presence to the east of Icklesham, will be considered. LIDAR data of the Icklesham ridge will then be shown.

Following this talk, an Extraordinary Meeting of the Society will be held. There will be one item of business, associated with a revision of the constitution; this is necessitated by a need for clarification: 'That the Name of the charity should be changed to the Winchelsea and Area Archaeological and Historical Society (WAAHS)'.

The additions are to demonstrate that understanding of Winchelsea's history only comes from appreciation of the whole geographic environment in which the town has existed, as exemplified in the talk. This amendment to the Constitution must be passed by not less than two thirds of the members present and voting at a general meeting.

*Andrew Scott*



The painstaking task of replacing damaged roof tiles on the Church roof was completed successfully in October.





## The Fall of the House of Usher



“We were blown away with it all. It was brilliant from start to finish so a huge thank you. It felt as though we were in private viewing of a west end production, set in such a special location.”

An audience of over 120 people over five performances were immersed in the incredible 13th century cellar of *Lines End* for this extraordinary tale of the destruction of the family and House of Usher. It was a hugely ambitious project involving a great number of people on stage and supporting the play in many other ways.



The demand for tickets was so strong we opened the dress rehearsal to a specially invited audience from the town. The actors worked for three months to stage the production; the cast ranged from 17 to 78 and the energy, passion and commitment to the text was amazing to watch in rehearsal and performance.

The FOAM committee would like to thank all the incredible cast, Carl Batchelor, Ed Street, Nicola Dealtry, John Davidson, Glen Marks, Brian Leonard and the extraordinary young actors from Tunbridge Wells, Charlotte England, Primrose Philipson and Milla Yeatman with Chloe Street keeping the script up to date. Nigel Ashton adapted, directed and designed the production and FOAM are very grateful for all his efforts and investment throughout.

The front of house team were quite remarkable and FOAM are deeply grateful for all their support. It was only possible with their help to keep the show running on time and getting over 100 people in all the right locations on time. The team consisted of: Cheryl Fraser-Sampson Helen Morris, Jeremy Moss, Chris Chappell, Alison Casey, Mark Harris, John and Sue McGeown, Jo Marks and Peter Hatch. We would also like to thank Graham Large for the lighting design, Gavin McFadyean for his superb stage management and Jonathan Richardson of the Stables Theatre Hastings for his outstanding support with the lighting.

I had great fun installing a new sound system in our cellar and preparing over 60 sound and music cues - thank you Nigel for giving me that role too! I'd also like to thank Ian Rowlands for allowing me to fill the house with actors and technicians and for hosting a brilliant after show party.

The production was sponsored by myself, Ian Rowlands Nigel Ashton and Peter Hatch. All the funds from ticket sales went directly to FOAM, raising £2,800 in total.

And thank you to our generous and brave audiences for making this production such a resounding success. If you missed it then here is a short video of highlights:

<https://vimeo.com/1024329621/a0051fa40b>

*With thanks, Phil Mack (on behalf of Ian Rowlands, Nigel Aston and Peter Hatch)*



## Icklesham Parish Council

### Upcoming Meetings

Monday 11th November:

Planning Meeting 6.15 pm at Winchelsea Court Hall

Monday 25th November:

Planning Meeting 6.15 pm followed by an Open Spaces Committee Meeting at Winchelsea Court Hall.

**Anti-Social Behaviour** Following on from our previous article, the Parish Council are annoyed to report that a further act of vandalism has taken place. Following the dog fouling taking place on the children's playground at Jubilee Field on 24th September, the Parish Council installed two new 'no dogs allowed' signs on both entrances to Jubilee Playground. These were then stolen on the evening of 25th September.

These signs and the installation have cost taxpayers over £200, and this theft has, of course, been reported to the police so any further information on the culprit would be very helpful and the Parish Council would urge anyone who has information regarding this criminal damage to contact the Parish Clerk as soon as possible.

What a shame that we now have to consider installing CCTV in the area to ensure that any future acts of vandalism will be recorded. Also that we may now have to have the further

cost of fencing off the children's playground to prevent dog fouling and the toxocara worm, which can cause a parasitic infection called toxocariasis. Children are more likely to get toxocariasis because they often put their hands in their mouths and may not wash them well enough. May we remind residents that dogs are not allowed in Jubilee Field children's playground and that dog fouling carries a maximum penalty of £1,000. Please consider the children and keep dogs on their leads.

**Rye Leisure Centre** Thanks to the very hard work of residents, the MP, Rye Town Council and Rother District Councillors, Rye Leisure Centre re-opened on 2nd October. The Leisure Centre has faced many challenges over the years due to rising costs and faced temporary closure in September 2022. We are sure that residents will agree that this is a very important resource, and we encourage residents to, as they say, use it or lose it. Well done everyone.

**Adult Exercise Equipment** The Hastings Area Archaeological Research Group have kindly offered to assist the Parish Council to obtain the necessary consents to install the adult exercise bikes in Jubilee Field. They are currently in the process of applying for licences from Historic England and will be undertaking a survey of the area once these are received. Their report will accompany the Parish Council's Schedule Ancient Monument Consent Application for the installation of the equipment. We will keep residents informed of the progress.

**Winchelsea Toilets** Rother District Council have recently commissioned another structural survey of Winchelsea toilets. The survey confirms that it is the surrounding trees that are causing the structural issues with the building. The survey also makes it clear that there is no easy solution to sorting out the issues and getting the toilets re-opened. The Parish Council realise that the toilets are vital for residents and visitors however we cannot accept them in their current state. The Parish Council are writing to Rother District Council to find a workable solution.

Please remember IPC are here to represent you and welcome your views on any matter. Please send your views and requests to [clerk@icklesham-pc.gov.uk](mailto:clerk@icklesham-pc.gov.uk) 07714 169901 or write to PO Box 148, Winchelsea TN31 9FP



## Beaujolais Wine Tasting

We are delighted to confirm that the next Winchelsea Wine Society event will be a Beaujolais Wine Tasting at 6.30pm on Friday 29th November in The New Hall.

The first half of the evening will focus on Beaujolais Nouveau and the heady mid-November days of the 1970s to 1980s when the race to get the first bottle back to UK cities, not least London, reached fever pitch proportions. Some of us remember this well and even fondly. We will taste three Beaujolais Nouveau wines from the 2024 vintage and hear how these wines are made to be drunk so young when the grapes have only been harvested 6-8 weeks beforehand. A little Brie and Baguette will be on hand to help complement these wines in what should be a good fun tasting.

The second half of the evening will be devoted to the terroir driven Cru Wines of Beaujolais, which are increasingly gaining attention as a source of premium quality wines at rather more attractive prices than their Burgundian neighbours. We will taste three contrasting Beaujolais Cru wines which hopefully will demonstrate that Beaujolais also produces some seriously good wines.

Tickets for this event are £15 each. Availability is limited to 50 people. To reserve your place, please email [winchelseawinesociety@gmail.com](mailto:winchelseawinesociety@gmail.com). Bank details and payment deadline will be sent out with acknowledgement.



**WINCHESEA  
CHRISTMAS  
WINDOWS**

---

**2024**

---

**Please join us this year to light up  
your window and bring the  
community together over the  
Christmas period by adding a  
little festive light to the town.**

---

**Theme; Christmas Carols, Christmas  
Songs or Christmas Classical Music.  
Saturday 14<sup>th</sup> December to 31<sup>st</sup>  
December from 4,30 to 9pm**

---

**For more information email -  
[deborahmbeverley@btinternet.com](mailto:deborahmbeverley@btinternet.com)  
or call Debbie Cosstick on (01797) 229087**

## Christmas Windows

As we rapidly approach the festive season, this is a reminder to everyone who wishes to take part in Winchelsea Christmas Windows 2024. We already have a number of residents who have volunteered to light and decorate their window and to be included on the walking trail.

This year's theme is Christmas Music and we encourage you to be as creative as you wish. In past years we have seen some wonderful windows and we hope that lots of you will take part this year.

The closing date for inclusion on the trail is Sunday 1st December as we need to get the maps printed and on sale in readiness for 'Switch On' night Saturday 14th December 4.30pm to 9pm and then every night at these times until 31st December.

The walking trails will be available for £1 donation from The New Inn, The Little Shop and Winchelsea Farm Kitchen. All profits will go to my Mayoress' children's charity, Demelza.

Please join us this Christmas to celebrate our beautiful town. To follow the trail and visit all the windows is such a lovely thing to do at Christmas time.

If you wish to take part and be included on the map, please contact me with your contact details, address and the title of your window or if you need further information.

Debbie Cosstick 01797 229087  
[deborahmbeverley@btinternet.com](mailto:deborahmbeverley@btinternet.com)

*Many thanks  
Debbie, Richard, Shirley, Lyn and Graham*





*Carol Prior writes:* We bought our first house in Winchelsea in 1988 and became permanent residents in 2001. My parents moved down from Hertfordshire in the same year, to a cottage in Castle Street, opposite the home of Malcolm Saville.

It is impossible not to be fascinated by the history of the area, the tales of smugglers, and the secret passages that exist beneath the town. Some, like the one in 'Wisteria Cottage', are no longer accessible, although the cellars, dating back many centuries, are still there, and are sometimes open to the public.

'The Secret of Wisteria Cottage' is the first of the Rye Bay Adventure Series, then, 'Treasure Hunt - Rye Royal' and 'Lights Over the Marsh'. All three follow the adventures of

Luke, Steph, Tom, Ollie, and Violet, not forgetting troublesome Lizzie in 'Lights Over the Marsh'. The books are written for ages 7 to 12.

'Peri Periwinkle of Rye Bay'. Matilda finds a baby on the beach, so she takes her back to the old railway carriage where the family has set up home. It's Matilda who names her Peri Periwinkle because 'she was lying on a pile of shells, just out of reach of the tide'.

All are available in e-book, and paperback, from Amazon and from the gift shop, Ethel Loves Me, in Rye.

We moved to Mount Martha (near Rye, Victoria) in 2011, and I lived between the UK and Australia until Covid restricted my comings and goings. I return often, at least twice a year, drawn like a moth to a flame.



Sunrise from Hiham Green *Jonathan Murphy*



## **Christ, Our Lord**

“I greet Him the days that I meet Him  
And bless when I understand.” *G M Hopkins*

He meets us where we are,  
Greets us in words we understand:  
Pascal's Wager to the betting man;  
Paradoxes to the philosopher;  
Metaphors to the poet; parables  
To the practical...all personalised,  
Tailored to fit, bespoke, uniquely apt -  
He meets and greets us where we are.

He knows us from before our beginnings,  
He loves us beyond our ends;  
When we're forsaken by the world,  
When age or illness threatens  
He is the best of friend - he heals  
Our inner selves, carries us home  
Like errant sheep on his strong shoulders.

*Richard Ormrod*



## **Rye Food Bank**

*Cam writes:* I have now fully recovered from my recent replacement knee operation and returned to my foodbank collection duties of collecting doorstep donations from town residents. In my absence Martin Owen and Robert Holland (both members of Rye and Winchelsea Rotary Club) deputised for me and I am most grateful. My next doorstep collection round the town will be on the morning of Tuesday 19th November. My thanks to all those residents who continue to support this venture.

*Donald Cameron-Clarke 01797 226414*

You can also take contributions directly to the food bank on any Wednesday morning before 11.30. Rye Food Bank is located at the Baptist Church in Cinque Ports Street and has its own car park to the rear of the building. Jempson's in Rye also has a collection point for donations within the store.

Financial donations are also much appreciated.

For further details about Rye Food Bank and how to make a donation go to [ryefoodbank.com](http://ryefoodbank.com)



stm

st michael's  
hospice

# Christmas on the Coast

Saturday 7th December

11am - 4pm

Stade Hall, Hastings Old Town

Join us for a festive family fun day - with Father Christmas, crafts and more!

For more information call **01424 456396**.  
[stmichaelshospice.com/event-diary](http://stmichaelshospice.com/event-diary)

Free  
entry

Registered charity number 288462 





## **Independent Rescue Boat**

We are delighted to announce that our Open Day raised an incredible £6,800. This is such a fantastic amount that will be divided between our annual operational costs and project funding. We thank everyone who supported the event in any way – we can't do it without you. The 2025 Open Day will take place on Sunday 24th August. Get in touch if you would like to be involved.

### **PLIRB future – Fundraising Appeal**

We have an ambitious four-year, two-stage fundraising plan which includes the development of the boathouse and the replacement of our primary rescue boat. Both are vital to secure the future of our operations. But we have an enormous fundraising challenge ahead of us – over £200,000 to raise in the next 3 to 4 years.

Our 'Buy a Brick to Build our Boathouse' initiative is the ideal way for everyone to help support this campaign – and receive something in return. Any donation over £10 towards the boathouse development will receive a personalised 'brick' on the artwork installation inside the new boathouse.

A short message can be included with your name. Whether you purchase for yourself or gift to a loved one, there will be a permanent thank you inside our boathouse.



**Vital training** Alongside our twice-weekly training sessions, the second group of volunteers completed their RYA Sea Survival course – a brilliantly fun and informative day that provides an opportunity to operate lifejackets and craft. After months of testing and trialling, we are delighted to transfer our paging system to SarCall, which is now integrated with UK Coastguard. SarCall not only provides an efficient and reliable paging service, but it also generates digital and time stamped records of our incidents and exercises which can be called upon as evidence at any time.

We continue to be blessed with amazing supporters – both individuals and organisations who choose to donate to us. We give huge thanks to Combe Haven, Bexhill Rotary Club, Jenco Engineering, Rural Past Times and Fairlight Bowls Club for their fantastic donations. If you know of a shop or outlet that would be happy to have one of our donation boxes, please let us know and we can drop one off. Every penny collected goes towards our operating costs.

**What's coming up** Our Pett Slip Buoys had a busy summer, raising money for our future boat fund. Coming up we'll be at Icklesham Christmas Fair (29th November), Christmas Carols and Shanties at Eater's at Pett Café (13th December), fundraising and singing at Morrisons, Hastings (21st December), an evening of shanties and festive fun at the Cove, Fairlight (22nd December). Visit [www.plirb.org/events](http://www.plirb.org/events) for more details.

**New volunteers** We recently welcomed two new volunteers to our growing team who are getting stuck in to their induction programme. Being a PLIRB volunteer is a brilliant way to learn essential skills, be part of a community group and make friends for life.

Contact us: [www.plirb.org](http://www.plirb.org) [info@plirb.org](mailto:info@plirb.org) / 01424 812 457

*Pett Level Independent Rescue Boat.*



**Art Auction in aid of  
Rye, Winchelsea & District  
Memorial Hospital Ltd**

**FRIDAY 29TH NOVEMBER  
6.15PM FOR 7PM**

**Hub on Rye Hill**

**Tickets £10 (includes complimentary  
refreshments) or bid for free online**

*Register via  
<https://ryehospital.org.uk/event/charity-art-auction/> and view digital catalogue  
Contact 01797 228842  
[fundraising@ryehospital.org.uk](mailto:fundraising@ryehospital.org.uk)*

Registered as a Charity in England & Wales no 1014232  
Company no 02740666



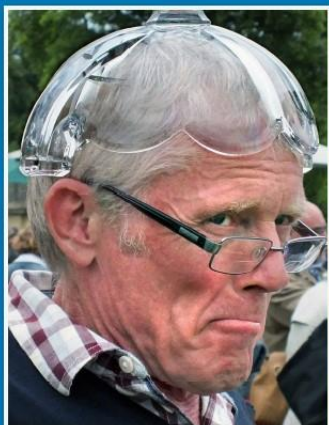
In aid of The Archive Resource Centre

# “Banter with Bonkers”

## An evening of reminiscences with

# ANDY McCONNELL

aka “The Glass Man” from BBC TV’s Antiques Roadshow



**SATURDAY 23**  
**NOVEMBER 2024**  
**at 7.30pm**

**PETT VILLAGE HALL**  
**PETT ROAD, PETT**  
**HASTINGS, TN35 4HD**

Licensed Bar, Raffle, plus Q&A with  
Andy

**£10 per ticket**

To book, scan the QR code with  
your phone or go to:-

[https://www.ticketsource.co.uk/  
the-archive-resource-centre](https://www.ticketsource.co.uk/the-archive-resource-centre)



Tickets will be available on the door, subject to availability and will be priced at £12.50, so please book online where possible. Online price is £10 per person

Further information is available from John  
Case on [johncase@icloud.com](mailto:johncase@icloud.com) or  
07525032198.

## What's On Weekly At Winchelsea New Hall

Mondays 09.30-10.15	Pilates with Hannah	Suitable for all. Contact Hannah on 07936 151529 or email <a href="mailto:hannahpilateshastings@gmail.com">hannahpilateshastings@gmail.com</a>
Mondays 15.00-15.50	Zumba Gold	Suitable for all. Contact Daisy at <a href="mailto:fitnessbythesea@outlook.com">fitnessbythesea@outlook.com</a>
Mondays 16.00-17.00	Pilates with Celia	Suitable for all ages and abilities. Contact Celia on <a href="mailto:kingcelia54@gmail.com">kingcelia54@gmail.com</a>
Tuesdays 10.00-11.00	Yoga with Natasha	Suitable for everyone from beginners to experienced. Contact Natasha on 07946 399211 or email <a href="mailto:nn@natashanandiniyogini.com">nn@natashanandiniyogini.com</a>
Tuesdays 14.00-15.30	Tune In Winchelsea	Fun singing group run by local tenor Gary Marriot. All ages and abilities welcome. Contact Rosemarie on 07941 458628 or email <a href="mailto:rosiero96@icloud.com">rosiero96@icloud.com</a>
Wednesdays 18.30-19.30	Strength and weights	Contact Rachel at <a href="mailto:rotherfitnessgroup@outlook.com">rotherfitnessgroup@outlook.com</a>
Wednesdays 19.30-20.30	Boot Camp	Contact Rachel at <a href="mailto:rotherfitnessgroup@outlook.com">rotherfitnessgroup@outlook.com</a>
Thursdays 09.30-10.30	Scottish Dancing	A fun, friendly class, suitable for beginners. Contact <a href="mailto:maddycoelho@hotmail.com">maddycoelho@hotmail.com</a>
Thursdays 18.00-19.00	HIIT	Contact Rachel <a href="mailto:rotherfitnessgroup@outlook.com">rotherfitnessgroup@outlook.com</a>
Fridays 09.30-10.15	Pilates with Hannah	All welcome. Contact Hannah on 07936 151529 or email <a href="mailto:hannahpilateshastings@gmail.com">hannahpilateshastings@gmail.com</a>
Fridays 10.45-11.45	Strictly <a href="http://www.fitsteps.com">Fitsteps</a>	Fun exercise class. Learn the dances on 'Strictly' without a partner. Contact Amanda on 07768 095184 or at <a href="mailto:amanda@beacroft.net">amanda@beacroft.net</a>

\*An informal table tennis group often plays on Thursdays -  
contact Jane at [janearchutowska@yahoo.co.uk](mailto:janearchutowska@yahoo.co.uk)

\*\*The hall has table tennis and badminton equipment and can be booked on an ad hoc  
basis for £2 per person per hour (£1 for under 16's) – contact Rosemarie on 07941  
458628 or at [rosiero96@icloud.com](mailto:rosiero96@icloud.com) for details

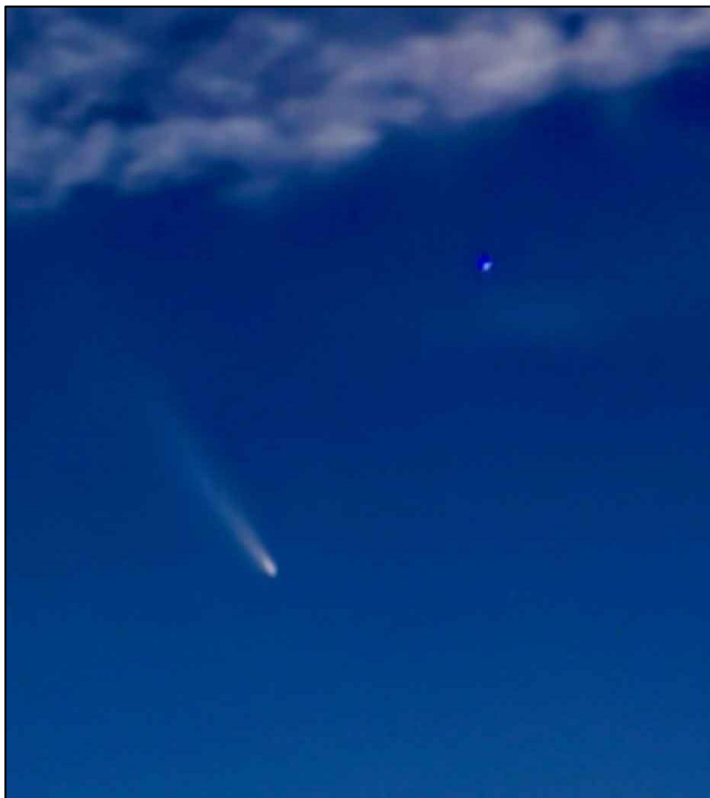


## Winchelsea Church and Town Calendar November 2024

- Saturday 2nd Church Market at St Thomas's - 10.30 till 12  
Remembrance Service at Wesley's Chapel - 10.30 for 11am
- Sunday 3rd** **8am: BCP Holy Communion at Winchelsea**  
*All Saints* **9.30am: Parish Eucharist at Pett**  
**11am: Parish Eucharist at Winchelsea**  
**4.30pm: Service of Thanksgiving for the Deceased**  
Charity Quiz for Royal British Legion - New Inn - 6.30 for 7pm
- Tuesday 5th Mothers' Prayers - 10am
- Wednesday 6th Garden Society visit to Kew
- Thursday 7th Bible Reading - New Inn - 6pm
- Saturday 9th Churchyard working party - 10am to 12  
Garden Society Talk - Court Hall - 2.30pm  
Barn Dance - WB Community Hall - 7pm
- Sunday 10th** **8.30am: BCP Holy Communion at Pett Level**  
*Remembrance Sunday* **10.45am: Act of Remembrance at Icklesham Memorial Hall**  
**10.55am : Act of Remembrance at Pett**  
**10.55am: Service of Remembrance at Winchelsea**
- Monday 11th Act of Remembrance at Winchelsea War Memorial - 11am
- Wednesday 13th Second Wednesday Society - New Hall - 2.30pm
- Friday 15th Church Sound and Light Appeal launch - St Thomas's - 6pm  
Literary Society - Court Hall - 7pm for 7.30
- Saturday 16th Christmas Fair - New Hall - 10.30am to 3pm  
Recital for Raise Your Voice - St Thomas's - 6pm
- Sunday 17th** **9.30am: Parish Eucharist at Pett**  
**11am: Parish Eucharist at Winchelsea**
- Saturday 23rd Cinque Ports Film - Court Hall - 2pm  
Film Night - New Hall - 6.30 for 7.30pm
- Sunday 24th** **9.30am: Parish Eucharist at Icklesham**  
**11am: Parish Eucharist at Winchelsea**  
Craft Fair - W B Community Hall - 10am to 3pm
- Friday 29th Fellowship Lunch - WB Community Hall - 12.30 for 1pm  
Wine Society - New Hall - 6.30pm
- Sun 1st Dec** **8am: BCP Holy Communion at Winchelsea**  
*Advent Sunday* **9.30am: Parish Eucharist at Pett**  
*11am: No Service at Winchelsea*  
**5pm: Benefice Advent Carol Service**
- Sat 7th Dec Church Market at St Thomas's - 10.30 till 12

### Further ahead

Sat 14th to 31st Dec Winchelsea Christmas Windows



Comet A3 from the Beacon 17th October Ian Rowlands

**Please send copy for the December Magazine to  
[ryeview@gmail.com](mailto:ryeview@gmail.com)  
before Friday 29th November**

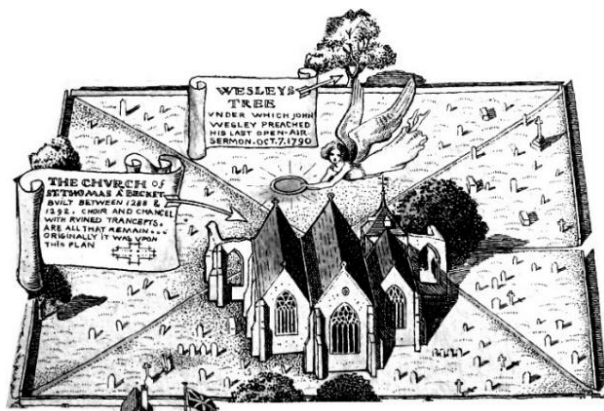
For Winchelsea Beach information go to  
[winchelseabeachcommunityassociation.co.uk](http://winchelseabeachcommunityassociation.co.uk)

For Winchelsea information go to  
[winchelsea.com](http://winchelsea.com)

For more information about the Church go to  
[winchelsea-icklesham-churches.org.uk](http://winchelsea-icklesham-churches.org.uk)

For weekly news from the local area go to  
[ryenews.org.uk](http://ryenews.org.uk)





## **Rector of Winchelsea and Icklesham and Priest in Charge of Pett**

The Revd Jonathan Meyer  
The Rectory, St Thomas Street, Winchelsea TN36 4EB  
01797 226254 [revdjonathan@btinternet.com](mailto:revdjonathan@btinternet.com)  
The Rector's day off is Monday

## **Churchwardens**

Celia King  
Stargazer, Morlais Place TN36 4LG  
01797 227858 [kingcelia54@gmail.com](mailto:kingcelia54@gmail.com)

Nigel Ashton  
Winchelsea Cottage, High Street TN36 4EA  
01797 222023 [nigelmarkashton@gmail.com](mailto:nigelmarkashton@gmail.com)

## **St Thomas' Primary School**

Headteacher Dale Saxby  
Friars Road TN36 4ED 01797 226479  
[office@st-thomas-winchelsea.e-sussex.sch.uk](mailto:office@st-thomas-winchelsea.e-sussex.sch.uk)

## **Friends of Winchelsea Church**

Chairman Ben Chishick  
Tower Cottage, Barrack Square TN36 4EA  
01797 226653 [towercottage@btinternet.com](mailto:towercottage@btinternet.com)

## **Parish Magazine**

Editor David Page  
4 Kent Close TN36 4EX  
01797 226524 [ryeview@gmail.com](mailto:ryeview@gmail.com)