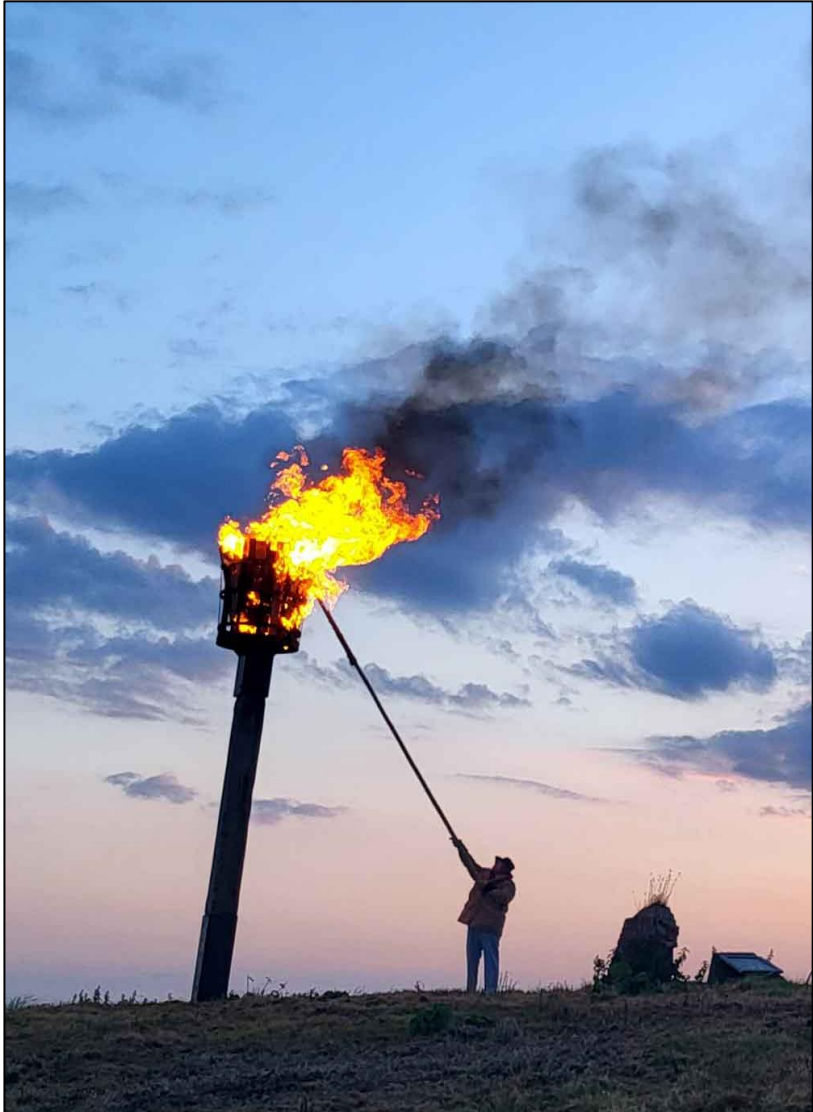


WINCHELSEA PARISH MAGAZINE

July 2024



Concert sponsored by Heringtons Solicitors

London Handel Players



Alexander Chance countertenor

Handel and Vivaldi

Saturday 6th July at 7.30pm

Winchelsea Arts

St Thomas' Church Winchelsea

TN36 4EB



Tickets online at
winchelsea-arts.org.uk
and at the door

£24

free for under 18s



winchelsea-arts.org.uk

[Click here to see the programme for this concert](#)

[Click here to see the full programme for the 24-25 Season](#)



Three Kings

Medieval statues of Edward I (1272-1307), Edward II (1307-27) and Edward III (1327-77) on the screen at York Minster.

Edward I was responsible for the re-creation of Winchelsea on Iham Hill after Old Winchelsea was swept away.

All three kings passed through Winchelsea in its heyday on their way to and from their territories in France and would have heard Mass at St Thomas's Church while they were here.

The carved heads of Edward I and his second wife Margaret, and of Edward II and his wife Isabella can be seen on the canopies of the Alard tombs in Winchelsea church. Edward I and Margaret were married in 1298 in Canterbury Cathedral by the Archbishop, Robert de Winchelsea (1294-1313).



Patronal Festival Service

The preacher at this year's Patronal Festival Service will be Canon Christopher Irvine. He is a former Principal of the College of the Resurrection, Mirfield, and Canon Librarian and Director of Education at Canterbury Cathedral, and more recently looked after the parishes of Ewhurst Green and Bodiam.

The Mayor and Corporation will join the congregation at St Thomas's for this special service at 11am on Sunday 7th July



Marking the Anniversary

Thursday 6th June saw the 80th Anniversary of D-Day, the largest combined naval, air and land operation ever conducted and the springboard for the invasion and liberation of Axis-occupied Europe. Sadly, due to the passage of time, this year's events, which included major ceremonies in Portsmouth, the National Memorial Arboretum in Staffordshire and of course in Normandy will probably prove to be the last significant anniversary that D-Day's dwindling veterans will be able to attend.

As part of the commemorations, all organisations responsible for beacons throughout the United Kingdom, Channel Islands, Isle of Man, Isles of Scilly and UK Overseas Territories were invited to participate, including the twenty-five organisations in East Sussex.

After a series of planning meetings, held at the direction of Geraldine I'Anson, the Honorary Secretary of the Winchelsea Millennium Artefacts Society (WMAS), all that was left to worry about - as had Eisenhower 80 years earlier - was whether the weather would hold for the day. However, unlike D-Day WMAS couldn't reschedule as Bollywood beckoned. Winchelsea's commemorations were planned to start with an exhibition accompanying a wine and canapés reception in the New Hall, followed by a procession to the beacon led by a bagpiper, with the lighting of the beacon at the appointed hour.

The exhibition, Winchelsea's unique contribution to the commemorative events, consisted of storyboards and booklets about D-Day and Winchelsea at war, as well as three brief biographies detailing the differing roles played in the Liberation of France by three former residents of Winchelsea. Sue Dormer, widow of Lt Col Henry Dormer, one of those three, is pictured here, holding his *Légion d'honneur* medal.



The storyboards, booklets and profiles included copies of maps, documents and photographs obtained from various sources, including public records and private collections. Many of the documents and photographs pertaining to Winchelsea had not hitherto been seen in public.

With wine running low, canapés consumed and the weather holding, the assembled residents 'yomped' across to the beacon accompanied by the haunting and stirring sound of the bagpipes playing *Flowers of the Forest* and *Lord Lovatt's Lament*. Upon arrival the Mayor, Peter Cosstick, read the official poem, *The International Tribute*, the Revd Jonathan Meyer said a prayer and David Merrifield and Neil Eastell lit the Winchelsea Beacon while the piper played the *Last Post*.

A big thank you to all the members of the WMAS Committee and to all those others who helped bring this event to fruition.



Poppy Appeal 2023 results

The audited figures have now been received from the Royal British Legion, which includes Gift Aid and donations made online. A total of £2,854.91 was raised in Winchelsea and Winchelsea Beach. This is £243.55 less than that was raised in 2022, but we know that the weather and inflationary pressures were against, so this represents a splendid effort.

The RBL has asked that its thanks, on behalf of the armed forces communities, be extended to all those who supported and contributed in every way to last year's appeal. Thank you very much.

John Rodley, Local Appeal Organiser

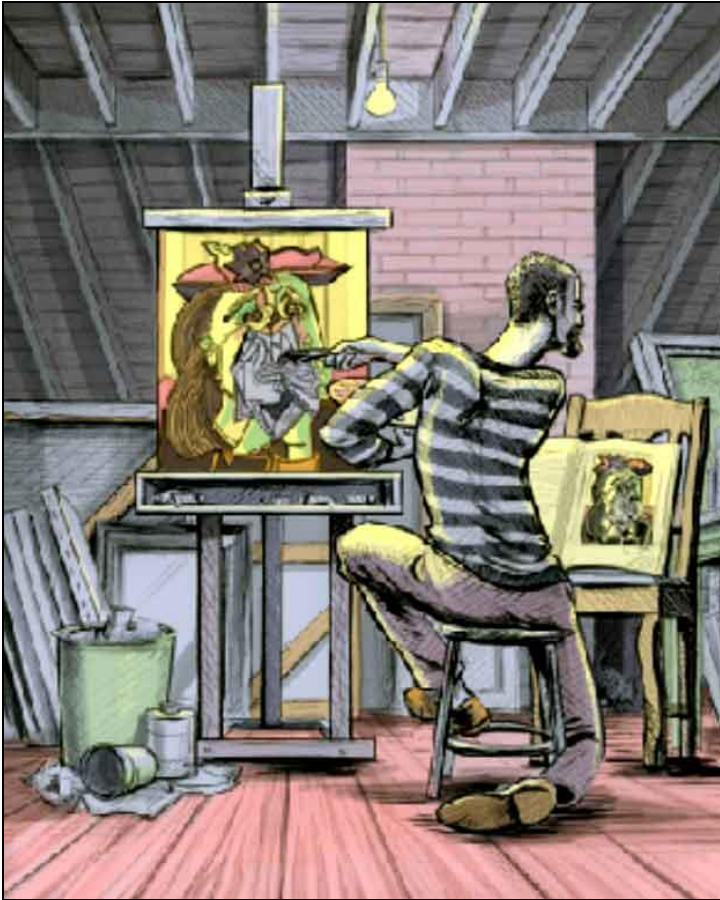


The Rudes will soon be here

The Rude Mechanicals are coming very soon. Don't miss them! They'll be on St Thomas's School field on Thursday 1st August at 7.30pm. Come with your own low-backed chairs from 6pm for picnics.

The production is called 'The Dressing Book' and is aimed at adults although some children will enjoy it. There is advice on suitability on the company's website. It is both a hilarious comedy - when two ladies turn up to a ball in identical dresses a fracas follows - but equally poetic and tender. It is set in 1795 in Tunbridge Wells but plays games with time and social status and has a twist in the tail. It follows the 'social round' of Maybelline who records which dresses she wears for each event in her 'dressing book' - and the men she encounters while wearing them. The play opens a window on the way clothes were - and still are - a means by which men could control the separated public and private worlds of women. Has anything changed? Through a process of 'magic realism' the action changes to the 1960's and Maybelline's clothes, which had been her prison, now set her free.

Tickets are available now on the company's website – therudes.co.uk. or ring 01323 501260.

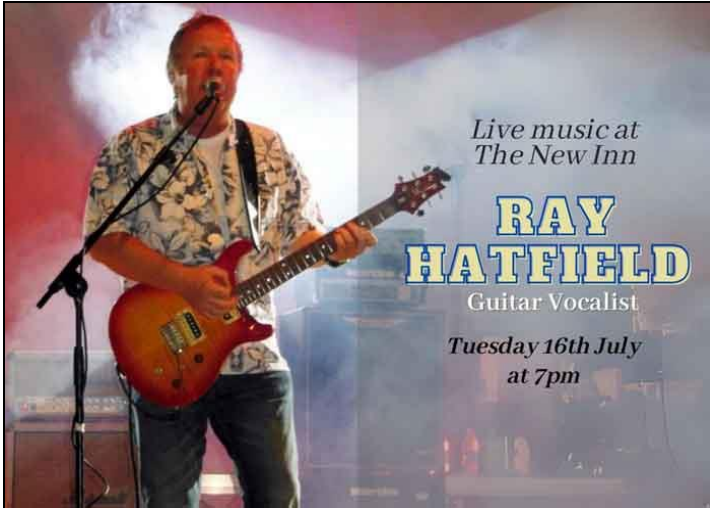


The Art of Forgery

Artist and historian Andrew Ashton returns to Second Wednesday - Statues, Beryl Cook, Banksy, Festival of Britain, to name a few previous talks. He comes with a new entertaining and informative talk. There will be a wealth of visual material but, beware; don't buy any.

10th July at 2.30pm in the New Hall.
Annual membership £15. Visitors £5.
Homemade tea £2

2ndWeds@gmail.com



*Live music at
The New Inn*

**RAY
HATFIELD**

Guitar Vocalist

*Tuesday 16th July
at 7pm*

Live Music at the New Inn

Following his gig during his visit here last year, Ray Hatfield will again be playing at the New Inn, on the evening of Tuesday 16th July. He will play two sets, beginning at about 7pm and 8pm, covering many of the great guitar based songs of the 70s to 90s - such as by Dire Straits, The Eagles, Santana, Van Morrison, Eric Clapton, and Creedence Clearwater, Pink Floyd and others.

Now mostly retired, Ray has been a professional band, session and touring guitarist and singer for over 40 years, including playing as lead guitar with Showaddywaddy, and as guitarist for Phil Collins, among many others. This is a chance to hear close up masterful playing of the Fender Strat guitar in what is like a mini-concert.

Come for the whole gig or, if time is limited you can just pop into the pub to hear a song or two. During the evening there will be the opportunity to make a small donation to the Mayor and Mayoress's Charity, Demelza Children's Care.



Cricket

The 'horrendum tempus' has continued unabated, with defeats at Burwash (who were last minute opponents after Lydd cried off), Catsfield and Northiam, where only the post-match bonhomie cheered a depressing day.

The much anticipated fixture against the Authors was called off due to the Wealden Festival (which brings them down to our neck of the woods) being cancelled. Fingers crossed for next year. *Mike Stoneham*

July fixtures

7th July v Catsfield - Home - 2pm start

21st July v Crowhurst - Home - 1.30pm start

28th July v Wittersham - Away - 2pm start

Your New Mayor invites you to

A Night at the Races



Saturday 27th July Doors open 6.30 - 1st race 7.00

Licensed cash bar

2 course meal included in ticket price

This is a ticketed event so please book early to avoid disappointment

Tickets £20 per person

(includes a glass of Pims on arrival)

WINCHELSEA NEW HALL

All Welcome

For tickets and enquiries please email:

peterrcosstick@btinternet.com or telephone (01797) 229 087

All proceeds to WINCHELSEA MUSEUM

[Click here to see how it works](#)

peterrcosstick@btinternet.com 01797 229087



Annual Parish Meeting Report

Icklesham Parish Council held its Annual Meeting at Icklesham Memorial Hall on Friday 31st May.

The meeting was chaired by Councillor Mrs Jacqui Stanford, Chair of Icklesham Parish Council, joined by other councillors, Rother Councillor Cheryl Creaser and East Sussex County Lead Councillor Keith Glazier.

Cllr Creaser gave an overview of Rother's activities throughout the year and confirmed that devolution of the public services is still ongoing. Cllr Glazier gave an overview of the County Council's activities over the year and confirmed that the biggest issue locally is the potholes. He confirmed that the County Council have invested huge sums of money into the roads however there is still a lot of work to do and roughly a £300,000,000 backlog of works. He was pleased to report that a recent Ofsted inspection confirmed that the County Council are running good children's services and an excellent looked after children service.

Cllr Mrs Stanford gave a report of the Parish Council's activities over the year including extensive works in Rye Harbour Car Park and toilets, various asset maintenance work, installation of adult exercise equipment, public consultations, cleaning of bus shelters and play equipment.

She said the Parish Council had given grants to all village halls of £1,725 to cover running costs and provided grants to St Thomas' Church in Winchelsea and St Nicolas' Church in Icklesham to help with grounds maintenance costs. Grants have also been made to the Five Villages Home Association for their mini-bus service, to the Rye and District Community Bus for the dial-a-ride service. and the Sailability project at Rye Harbour Sailing Club.

Cllr Mrs Stanford also reported that IPC were making early repayment of two loans, saving £10,500 in interest payments as they had decided to clear the decks for their next project of demolishing and rebuilding Winchelsea Beach toilets.

Draft Local Plan

Jeff Pyrah, Rother District Council's Planning Policy Manager gave a very interesting presentation on the draft Local Plan 2020-2040 which is currently open for public consultation. The Local Plan will guide land use and development throughout Rother over the period 2020-2040. *Please visit the dedicated page* on Rother District Council's website for further information on the local plan and how to get involved with the consultation. The consultation closes on 23rd July.

Mayor presents Community Awards

Mayor of Winchelsea, Peter Cosstick, also gave a very informative talk on the history of Winchelsea Museum and the Corporation of Winchelsea. He also very kindly presented Community Awards to individuals and organisations selected by the Parish Council for their tremendous voluntary work for the local community.

Recipients of these Awards were:-

Andi Rivett for his volunteer work for Rye Harbour, inspecting the flagpole and for providing flags to mark important occasions.

Nathan Bligh and Danny Watkins of The Little Shop in Winchelsea for going above and beyond their duties for the

local community including delivering prescriptions to elderly residents.

Danny Williams for organising community litter picks on the A259 between Icklesham and Winchelsea.

Dave Buxton for giving his time to provide photographs for the Parish Council's new website.

Icklesham Trust Committee (collected by Trish Milner) for organising and running the 'Tuesday Club' for the benefit of local residents.

John Botterell of Botterell Fresh Fish of Rye Harbour for donating the first boat for planting up at Rye Harbour Car Park and for taking his time to come and deliver it.

John Spencer for his dedication and enormous amounts of time devoted to re-instating Winchelsea train station for local residents.

Rye Bay Football Club for their voluntary work running and organising Rye Bay Football Club.

Mick Caister for his volunteer work opening and closing Rye Harbour Car Park which has helped the Parish Council enormously.

Paul and Debbie Ramsey of the New Inn Winchelsea for their voluntary work and for hosting numerous events for local charities.

Rob Brown for taking landscape photos for the Winchelsea Interpretation Boards.

IPC would like to thank all those who attended the meeting, and hope they found it informative and enjoyed it as much as we did. It was lovely to talk to so many residents over refreshments after the meeting.

Jenner Sands

Clerk and RFO

Icklesham Parish Council

Email: ickleshampc@hotmail.co.uk

07714 169901



Repaired and repainted, the church flagpole goes back up and the decaying New Hall sycamore tree comes down.





Annual Grass Cutting Appeal

Our magnificent churchyard is one of the glories of Winchelsea, central to the town and being a de-facto village green to be enjoyed by residents and visitors alike. Parts of the churchyard are now being managed to encourage the growth of wild flowers and grasses and this new dimension is appreciated by many.

Care of the churchyard is the responsibility of the Parochial Church Council (PCC). In the year ahead, it intends to maintain the wild flower circles whilst mowing the rest of the grass, as well as maintaining the trees and caring for the War Memorial. Furthermore, it regularly undertakes clearing and tidying, with the help of a number of town volunteers.

The cost of this activity is estimated at £4,500 for the current year, each cut costing £300. The PCC is grateful for the support of Icklesham Parish Council, which usually contributes £1,800.

The PCC is also very grateful for the help that so many of you have given to pay for mowing in the past and we are now appealing again for your support in 2024.

If you felt able to support us, you could do so in the following ways:

1. Using a gift aid envelope (marking it Churchyard'). Donations can be placed in the black box in church. Cheques should be made payable to '*PCC Winchelsea*'
2. BACS payments can be made using these details - PCC Winchelsea, Sort Code 30 90 28, Ac No 01964020, referenced 'Churchyard'. Please ask for a Gift aid form, which can be filed and kept for any future donations
3. You can visit our Justgiving page at [justgiving.com/fundraising/winchelseapec](https://www.justgiving.com/fundraising/winchelseapec). Gift aid is collected automatically less a small charge. You can give anonymously but please indicate if you are donating towards the churchyard appeal.

Thank you!
Nigel Ashton Churchwarden

Open Gardens results

The heroes of the Saturday NGS opening were the car park team who braved horizontal rain and high winds whipping up the Brede valley. Though the rain eased off in the afternoon, the wind continued to blow with the inevitable result that visitor numbers were much lower than usual and the amount raised for the charities correspondingly less.

The final figures for Saturday were just over £4,000, of which £400 went to Friary Gardeners and the rest to support cancer care and nursing charities through the NGS.

Weather improved for the Sunday opening in aid of the Friends of the Memorial Hospital, Rye who raised over £1,000 from admissions and teas.

A big thank you to our dedicated gardeners, the tea team and everyone who baked a cake and to the car park team who, amazingly, stood their ground and weren't blown over the hill.

**Winchelsea Garden
Society**

Afternoon outing to

**Old Bladbean
Stud Gardens**

Tuesday 23 July

Coach departs at 12:15 pm from German Street. Garden visit from 2 to 4 pm with a guided tour by the owner. Return to Winchelsea around 5:30 pm.

Inclusive price for members covers travel, the tour and afternoon tea.

£20

Places are limited to 22 people. To guarantee your place, please book and pay Judith Payne by cash or cheque at Castle Cottage, Castle Street, Winchelsea TN36 4EL

For further information please contact Shirley Meyer on shirleymeyer@btinternet.com



shirleymeyer@btinternet.com



Clinton Lodge and Town Place

Philip Kent writes: On 19th June about 30 members of Garden Society were treated to a grand day out by coach visiting two gardens near Haywards Heath in West Sussex: Clinton Lodge and Town Place.

At the first of these, Clinton Lodge, to say we were in for a pleasant surprise would be a gross understatement. We were met in the courtyard of the handsome 17th-century house by the owner, Lady Noel Collum, who gave a short introduction to the history of the house and gardens set on the edge of beautiful parkland belonging to nearby Sheffield Park.

It soon became apparent that over the past fifty years her ladyship has been largely responsible for designing the whole of the gardens almost down to the last plant to provide a haven of peace and tranquillity for her husband who had to be “away a lot” and for her family.

Bordered by tall hornbeam hedges the gardens form a series of delightful rooms, one such being full of heavily scented old roses in pinks and white, another containing a glorious wildflower meadow, yet another with towering blue and white herbaceous borders and so on. There was a tempting outdoor swimming pool in an orchard setting, a Roman temple perfect for dinner parties, secret passages with stunning glimpses of the surrounding countryside and everywhere places for quiet contemplation.

For me, and others, this garden represented a perfect use of space and presence within its setting, echoing with the ghosts of good times past and present joys. To top it all at the end of our visit we were treated to delicious home-made cakes and coffee prepared and served by a genuine Italian maid.

Nearby Town Place was equally impressive. This time an 18th-century tile hung Sussex farmhouse with several acres of manicured lawns, magnificent trees, colourful borders, glasshouses and nursery beds, this time a modern rose garden in full bloom, some intriguing sculpted hedges (pictured above) and shrubs and even a full scale ruined priory crafted out of hornbeam which had to be seen to be believed, complete with columns and buttresses.

All in all this was a very enjoyable trip organised by Shirley Meyer to whom we owe much thanks.



Conservation Society AGM Report

John Spencer writes: One might wonder if a quiet yet historic town such as Winchelsea, protected by being in an Area of Outstanding Natural Beauty (AONB), a Conservation Area and in an area of Archaeological Notification, needs any amateur sleuths to help protect its built environment, green spaces and views. But this year new concerns and old have made it a very busy year indeed for our committee.

We have had a bumper year of two very interesting and perhaps provocative lectures and two outstanding visits to sites of conservation in *Boxley Abbey* near Maidstone and the *Maison Dieu* and the *Grand Staircase* in Dover.

The amazing investigative work of committee members has shone a light on issues such as the will of Anthony Mallows Freeman of *Wickham Manor Farm*, which was previously unobtainable, and an issue of Hansard detailing the settling of his death duties in exchange for the National Trust inheriting his estate. There it is clearly recorded that the land around Winchelsea was given to the NT to be 'preserved for public enjoyment'. The research work that members of the committee have undertaken to find these important truths has been immense.

In addition, the society has worked hard to find out how it came about that the Parish Council and the NT agreed to exclusively liaise on all matters concerning our town, excluding the societies who had a real interest in protecting the built environment, the green spaces and views for residents and tourists alike. It was thanks to the IPC chair and clerk that this was finally unravelled and subsequently changed in our favour.

Thus, recently we held our first face-to-face meeting with the Dover NT and our committee. Matters discussed included the loss of ancient, unregistered footpaths, new metal fencing from China with a large carbon footprint, padlocks on several dozen gates on the fields that surround the town on three sides. And there was much more discussed. This meeting of minds was a success and the NT have asked for a second meeting which is planned for the end of July.

We have battled for twenty years with Rother District Council to sort out the two almost completely abandoned dwellings in this town. One of these is Grade 2* listed and a number of masonry cracks have resulted from this lack of maintenance. Tiles are missing on its western wall allowing birds, wasps etc. to enter the building. Again, and again RDC have gone for enforcement but failed to check if repairs have been carried out.

They also refuse to consider compulsory purchase as it 'could' be costly and of course time consuming. We have produced the evidence that shows other councils in England have used available grants to offset any expenses that might accrue from compulsory purchase. If action is not taken, the building with its multiple flying freeholds will become so expensive to repair, that it will never be saleable. All the planning regulations that result from being in a conservation area for these two buildings are being abrogated by RDC.

The *Greyfriars* ruins in Winchelsea are iconic, but they have been on Historic England's 'At Risk' register for many years. One small wall next to the monks' door collapsed four years ago and has still not been repaired. Hawthorn is growing higher on the top of one of the walls of the chancel, and this poses a risk to the masonry. It just needs high winds to blow. We just have to trust that soon there will be a plan for conserving this historic ruin, which is in such a beautiful setting. It certainly deserves it.

Meantime we will, I hope, campaign to get Parliament to give Historic England some legal support to enable buildings of national interest that are at risk, to be conserved, even if they are in public or private hands.

Set against these difficult problems it is worth noting a major positive for the town. We can be so grateful for the first-class restoration of *Glebe* by Martin Donnelly. This hugely expensive work has saved this lovely old building from dereliction. It shows what can be achieved by experts in conservation together with an owner who is interested to save historic fabric. So not all is doom and gloom.

Time has been spent supporting residents in efforts to help them cope with an invasion of rabbits and nettles from re-wilded areas, spreading into their adjacent gardens. Solutions have been found to stop pet goats from destroying the bark of trees, after we were alerted by a resident to a problem none of us had experienced before. Icklesham Parish Council have throughout been very supportive of our society and Winchelsea.

But just when we were hoping nothing much else this year would engage our attention, we were alerted, and have seen at *Crutches Farm* how a very pleasant farm building has been allowed to become derelict and then in part collapse. At present one remnant is supported by buttresses. And finally multiple retrospective planning applications have had to be submitted regarding all the changes that are happening to the *Lodge* which is in the Winchelsea Conservation Area.

If this report helps residents to realise the scale of the challenges this beautiful town faces in 2024 our work in the Conservation Society will have been worthwhile. We would be delighted to welcome more members to join the society, to help us continue to take an interest in preserving what we can and supporting residents of this town.



John Wesley's Chapel

At the Open Gardens Day on Saturday 15th June we were delighted to welcome 60 visitors to the Chapel during the day. A number were very interested in the work of our 'artist-in-residence', Gillian, to improve the quality of the large board painting of Wesley preaching to the townspeople under the historic ash tree. Further work is expected at the Coffee Morning in August.

The board painting was one of a number used in a town pageant many years ago (the 1980s?) with this one being given to the Chapel at the end of the proceedings.

The next events at the Chapel are

Sunday 14th July, when the Chapel will be celebrating its Anniversary, 239 years since it was built in 1785. We meet at 2.30pm for hymn singing under the Wesley tree, opposite the New Inn, hopefully in glorious sunshine, before the service at 3pm in the Chapel which will be led by Rev David and Christine Freeland.

On Saturday 10th August we have a Coffee Morning from 10am to 12pm. Time for a chill and a chat. If you would also like to bring some home-made goodies to share too, that would be brilliant.

WINCHELSEA SUMMER FETE



SATURDAY AUGUST 10TH

12 NOON - 4 PM

WINCHELSEA CRICKET FIELD
ADMISSION FREE



Recycle your garden tools

Winchelsea Garden Society will again be selling unwanted garden tools at this years' Winchelsea Fete on 10th August. Last year we had many delighted customers purchasing our recycled tools. If you have any garden related items large or small and would like to donate them please contact Cynthia Martin either by email or telephone.

cynthiamartin5835@gmail.com or 01797 226074.

Help us raise money to maintain the town's anclent buildings



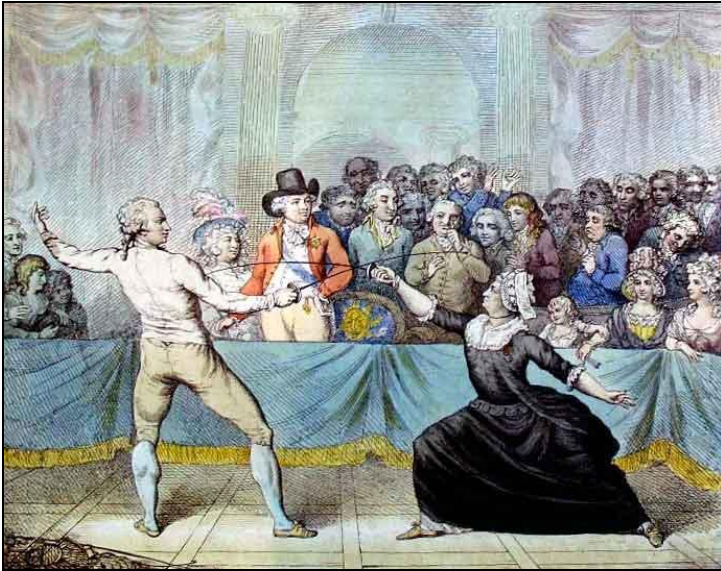
Winchelsea Fete
August 10th

**We need
your wine!**

**Please can
you spare a
bottle or two
of your best
plonk!**



**Drop your bottles off at
Phil & Ian's at Lines End
or Ali & Chris's at Wren
Cottage by August 7th!**



Woman Is a Sometime Thing?

This phrase from Gershwin's *Porgy and Bess* sprang to mind as Stephen Brogan recounted the gender-fluid life of the Chevalier d'Éon to the ever-curious Lit Soc audience.

Born in 1728 into a gentry family in Tonnerre in Burgundy, the Chevalier ostensibly started his idiosyncratically biphasic life as a male. His youthful intellect favourably impressed Voltaire when they met and he began working in regional administration. At the start of the *Seven Years' War* in 1756 he was enrolled in *Le Secret du Roi* or The King's Secret, an unofficial espionage network reporting directly to Louis XV.

On a mission to the Tsarina in St. Petersburg, difficulties crossing the Russian border were circumvented by donning female garb, the first recorded instance of his later proclivity. Returning to France in 1760, he fought in the war as a captain of dragoons, but injury forced withdrawal from combat and transfer to the French peace delegation in London. The Treaty of Paris in 1763 ended the war but saw d'Éon back in London spying for France under diplomatic cover. His service earned him the Cross of St. Louis and the title of *Chevalier* (knight).

Drawn into factional feuding in the French diplomatic service, the Chevalier disobeyed orders to return to France and there began a bizarre interlude where he committed the heinous crime of publishing diplomatic correspondence and, possibly by threatening further leaks, succeeded in having his pension restored.

D'Éon's sex and adoption of female dress became contentious and further visits to France were conditional on appearing female. He claimed to have been born female but forced into gender dissimulation to enable his father to secure an inheritance. Louis XVI proclaimed d'Éon a woman. England's gambling fraternity ran a betting pool on his anatomical sex.

Authority remained prepared to adjudicate without any physical examination and the eminent British judge, Lord Mansfield, in a case brought by the gambling community, independently endorsed Louis XVI's verdict.

A Georgian celebrity career beckoned in fencing and chess tournaments, most notably a match against another famed exponent of the foil at Carleton House with the Prince Regent hosting. Despite the encumbrance of three petticoats, the Chevalier emerged victorious.

Wounds sustained in 1796 forced retirement and as the French revolutionaries had stopped his pension and seized the family estate in Tonnerre, d'Éon was condemned to a penurious existence in London in the company of a widow, Mrs Cole. Incapacitated by a stroke, he was bedbound for the last four years of his life. Discovering the Chevalier's corpse in their shared dwelling in 1810, Mrs. Cole was astonished to find the cadaver had male genitalia, a finding she speedily authenticated by summoning notaries and physicians as supportive witnesses.

Despite some French commentators dismissing the Chevalier's biography as "une vie sans queue ni tête", a cock and bull story, he still stalks the world of animated cartoons and even featured with David Tennant in an episode of *Dr Who*. The Q&A furnished the opportunity to further explore the hot topic of gender incongruence.

Bill Doherty



Conservation Society at Dover

John Spencer reports on the trip to the Maison Dieu and the Grand Staircase in Dover by Winchelsea Conservation Society.

Despite much damage in the Second World War, there are some absolutely fascinating buildings left in the centre of Dover, which are little known. One is the *Maison Dieu* which contains a medieval chapel used by pilgrims on their way to Europe or coming the other way to Canterbury.

The building itself is huge and is being restored with the help of a £10 million HLF grant. We could see the remnants of

medieval stonework in the walls of the later Victorian main building. Despite scaffolding everywhere, we were taken into the stunning and quite massive roof via many very safe walkways and staircases. The Victorian stained glass was beautiful, but much was covered by protective plastic sheeting. This building is so large that some small part of it will become Landmark Trust but most of the *Maison Dieu* will be used as before, by Dover District Council.

Money needs to be raised to complete this transformation and provide for ongoing maintenance. When the *Maison Dieu* has been fully restored and in part repurposed it was unanimously decided that we should return next year.

Lunchtime was in an excellent hotel restaurant by the beach and inner harbour. Suitably refreshed we then began the most amazing tour. The bus climbed a little-known road out of central Dover, and we turned off that onto a road overgrown by weeds (but with very few potholes). The hillside was covered in greenery. We were totally on our own, yet still in central Dover.

Arriving at the top of the *Grand Staircase* our guide from the *Maison Dieu* had to unlock multiple barriers. We then could access the three helical staircases that run within the walls of this iconic Napoleonic defence structure, which was built in the early 1800s. There used to be three large barracks by the top of this tower, but they were wantonly destroyed relatively recently.

The Grand Staircase was to be used to defend Dover and England from an expected invasion by Napoleon. It would allow so many troops to get down to the beach in minutes. Like the Military Canal, the Grand Staircase was of course never required for the country's defence. This massive, strongly built tall tower took our breath away.

We would particularly like to thank David Merrifield and his friend the Mayor of Dover for organising this visit, and the excellent curator of Dover Museum who cheerfully guided us around throughout the day. David also organised the fish and chip lunch which everyone enjoyed, and we hope that he did too. Our thanks go to committee members - Jerry for the eye catching posters and to Judith Payne for helping engineer a tiny profit rather than a large loss.



Summer Dance at Winchelsea Beach Community Hall

The Kytes will play for a Summer Dance on Saturday 3rd August from 7.30 to 10.30pm. Fish and chip supper.

Tickets cost £20 and are available from Mary Parker
07927 107678

Table Sale

The next table sale takes place on Saturday 20th July at 11am. Tea, coffee and cakes, tombola. £1 entry includes a drink. All proceeds will go to the Hall extension project.

Winchelsea Beach Community Association
Charity No. 278165



Audition Notice

Lines End Theatre
in association with Concord Theatrical and FOAM present

The Fall of the House of Usher

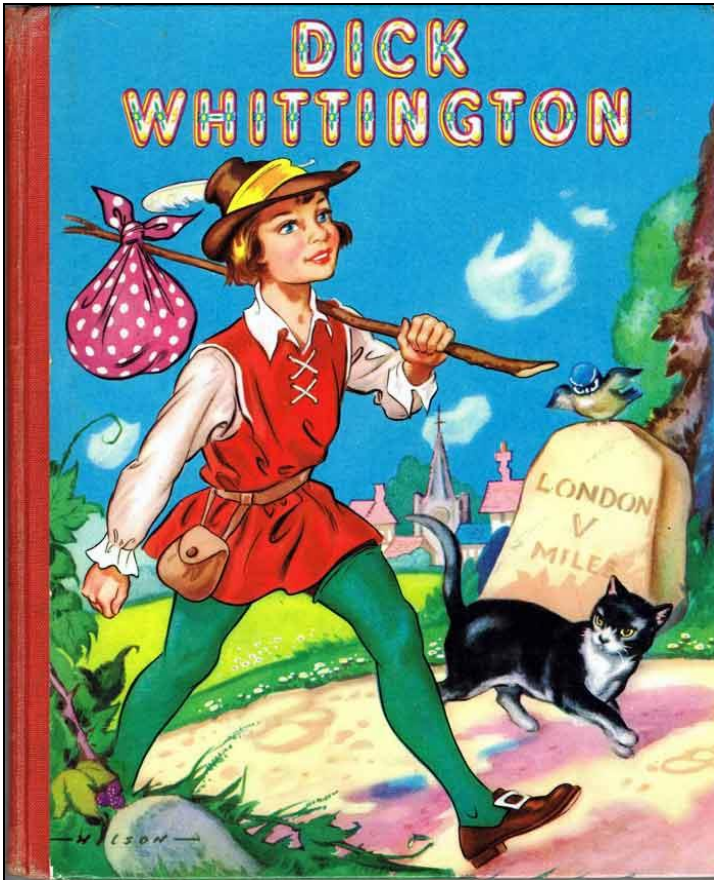
by Edgar Alan Poe, adapted by Steven Berkoff
Produced by Phil Mack and Ian Rowlands
Directed and designed by Nigel Ashton

I had been passing alone, on horseback, through a singularly dreary tract of country, and at length found myself, as the shades of evening drew on, within view of the melancholy House of Usher.

Performances
Friday 25th October - 7.30pm,
Saturday 26th October - 3pm and 7.30 pm

Auditions and a read through, with wine, will take place on
Friday 12th July at 6.30pm at Lines End.

The play has two principal roles and an ensemble of actors
who narrate some parts of the text.



A Panto for Winchelsea

With summer hardly started, it seems a bit early to be thinking about Christmas, but we just couldn't wait to share the news – this year, Winchelsea is going to have its very own pantomime. *Dick Whittington* is coming to the New Hall on Saturday 25th January.

The plot is perfect for Winchelsea; a young man comes to town with his cat, wins the heart of the shopkeeper's daughter and after a tussle with King Rat becomes Mayor.

The play will be directed by our resident theatrical genius Nigel Ashton with a script adapted by Jo Marks, while local artists have agreed to help produce the scenery and create some wonderful backdrops. This is very much a community

project, so we would like as many of you to get involved as possible, so if you fancy performing, helping backstage or working front of house, please get in touch.

And if you don't fancy any of those tasks, you can still lend your support, by coming along to the show and help us raise some money for good causes.

Profits are going to be split between the New Hall and the charity, *Demelza*. And, of course, no Winchelsea event would be complete without a raffle, and ours will be used to raise money for the church. So please put 25th January in your diaries.

Just to get you in the mood:

Q: Why does Dick Whittington have a beard?

A: Because eight out of ten owners know that their cats prefer whiskers.

Please speak to one of us, about joining the fun.

Nigel Ashton, Ali Casey, Chris Chappell, Peter Cosstick, Glen and Jo Marks.

Christmas Windows EGM

After several years of successful fundraising for good causes and encouraging the residents of this town to decorate their windows and gardens at Christmas, the current committee have, by a simple majority, decided that they wish to close down the group in its current form.

They will, therefore, be calling an Extraordinary General Meeting on Wednesday 31st July in the Court Hall at 7pm, to dissolve the group. All members (those who have participated in the event) are eligible to attend. The meeting is for this sole purpose and also to agree the charitable causes to which the remaining funds will be donated.

The Committee: Chris Chappell, Ali Casey, Shirley Meyer, Graham Large.



WINCHELSEA FILM NIGHT

Winchelsea Residents Association in conjunction with Winchelsea New Hall

The Constant Gardener



*Director Fernando Meirelles
adaptation of John le Carré's
best-selling novel.*

*Starring:
Ralph Fiennes and Rachel Weisz.*

SATURDAY 20th JULY 6.30 for 7.30 SCREENING

Admission Free

Refreshments, Pay Bar

Come early, enjoy a drink or two



Kt Bruce

Winchelsea Goes to Bollywood

June's much-enjoyed *Winchelsea Goes to Bollywood* event, spearheaded by David Dickson and Delane Shingadia, raised over £1,800 towards renovation work on the New Hall.

[Click here for more pictures and a full report in Rye News](#)



Rye Food Bank

You can find out more about Rye Food Bank and ways you can offer support, here: ryefoodbank.com

Martin Owen, still standing in for Cam, will be doing the next monthly doorstep collection from those of you who are regular donors on the morning of Tuesday 16th July.

If you'd like to be added to the list of donors, please let Martin know by email mojowen@outlook.com or phone 01797 226968.

Winchelsea Farm Kitchen Ltd

We thought we should write to introduce ourselves. We have recently taken the tenancy of the Winchelsea Farm Kitchen and plan to open for business by end July. We understand from our landlord that the premises did have an alcohol licence for on and off sales until fairly recently and he has kindly given us permission to reapply for one to complement our offering to the town.

We intend to offer brunch, teas, suppers and private events together with some ancillary lifestyle retail with art, books, jewellery, clothes in part of our shop we are calling vintage, art and unique. Our alcohol offering will consist of bespoke wines together with champagne, cocktails and craft bottled beer.

We are not wanting to set up a bar or noisy venue in Winchelsea we just want to complement our food offerings and create a special place for locals to go and enjoy not only a cream tea but also a charcuterie board accompanied by a glass of wine.

Our opening hours generally will be 9am to 6pm. But we plan to open a little later on Fridays and Saturdays probably until 10pm. This may be initially on Fridays only it depends on the demand. Having spoken to several local people, especially the ones who live between London and Winchelsea, we gather this is something they would support and welcome.

We wanted to write to you to give you the opportunity for feedback to us whilst we are in the process of submitting our application we welcome your views to ensure all parties are happy. If anyone would like to come and chat to us about our plans please do not hesitate to contact us.

Winchelsea Farm Kitchen Ltd

winchelseafarmkitchen2@gmail.com



St Michael's Hospice

St Michael's Hospice supports and enables the community of Hastings and Rother to live well with dying, death and loss. Recently, the Hospice spoke to Denise, a patient staying on the In-Patient Unit (IPU). She wasn't sure what to expect before her stay and was quite scared, but she's since left with a completely new perspective. Here's her story.

Denise had to give up working as a carer in 2019 when she was diagnosed with breast cancer, she was diagnosed with secondary cancer in 2021. She first came to the Hospice by attending the Wellbeing Programme. She says, "I did some Guided Relaxation with Colin and I took part in a couple of sessions. I fell asleep both times. I know they call it relaxation, but I don't think you're meant to relax that much."

"I've been in and out of Hospital, but a recent incident meant I needed support from the Hospice. To be totally honest, I was scared about coming here at first." Finding herself in need of some support Denise spent some time on the IPU. She shares that it was a "life changing experience," she was able to have her dog Hugo visit and it meant she could attend Thursday Coffee Stop, which she's enjoyed since attending the Wellbeing Programme. Denise's goal is to remain independent and do things for herself, to walk with

her stick again and to continue attending events at the Hospice.

Denise goes on to say “When the time comes though, I’d like to die at the Hospice. It’s such a lovely place, it’s worth its weight in gold and the staff are absolutely fantastic, nothing is too much trouble. I’ve made some good friends here too. You couldn’t ask for better support. The Hospice is nothing to be scared of. Yes, it is a place where people die but it’s also so much more than that. It allows you to spend the time you have left in a positive and good way.”

If you’d like to read Denise’s full story or find out more about how your local Hospice may be able to support you, or your family or friends, please visit stmichaelshospice.com

Rye and District Country Show

Join the Rye and District Country Show Committee for this year’s fun filled family day out on Saturday 17th August from 10am - 4pm. Whether it’s to show off your four-legged friends or to see the classic four-wheeled motors, there’s something for everyone to enjoy. There will be a traditional horse show, fun dog show, a classic car show and open-air country fair with stalls and so much more. Held at Elm Tree Farm, Icklesham, TN36 4BH, the event is kindly organised by a group of volunteers in aid of St Michael’s Hospice. More information at fundraising@stmichaelshospice.com or call 01424 456396.

Moonlight and Memories

Celebrate life, love and friendship and remember loved ones at St Michael’s Hospice Moonlight and Memories Walk. On Saturday 14th September from 6 to 11pm, walkers will begin the 10km route at the Hospice, head along St Leonards seafront to Galley Hill in Bexhill on Sea and back again to complete their challenge. There will then be an opportunity to illuminate the Hospice gardens with beautifully decorated paper lanterns and take time to pause, reflect and remember loved ones. To buy your ticket, visit stmichaelshospice.com/moonlight or call 01424 456396.

IN AID OF THE
HOSPITAL AT RYE

Bowls FUN DAY

at Rye Bowls Club

3 player team entry fee of £15
(pre-book or drop in)
Minimum player age is 15
Flat shoes only

No dogs on the bowling green please



Refreshments



Tuition and equipment provided



No experience needed



Tony Kember
07534 027068



ryehospital.org.uk/event/



Rye Bowls Club, TN31 7LP

Rye, Winchelsea & District Memorial Hospital Ltd is registered as a Charity in England & Wales no. 1014232
Company no. 02740665



What's On Weekly At Winchelsea New Hall

Mondays 09.30- 10.15	Pilates with Hannah	Suitable for all. Contact Hannah on 07936 151529 or email hannahpilateshastings@gmail.com
Mondays 15.00- 15.50	Zumba Gold	Suitable for all. Contact Daisy at fitnessbythesea@outlook.com
Mondays 16.00- 17.00	Pilates with Celia	Suitable for all ages and abilities. Contact Celia on kingcelia54@gmail.com
Tuesdays 10.00- 11.00	Yoga with Natasha	Suitable for everyone from beginners to experienced. Contact Natasha on 07946 399211 or email nn@natashanandinioqini.com
Tuesdays 14.00- 15.30	Tune In Winchelsea	Fun singing group run by local tenor Gary Marriot. All ages and abilities welcome. Contact Rosemarie on 07941 458628 or email rosiero96@icloud.com
Thursdays 09.30- 10.30	Scottish Dancing	A fun, friendly class, suitable for beginners. Contact Maddy at maddycoelho@hotmail.com
Fridays 09.30- 10.15	Pilates with Hannah	All welcome. Contact Hannah on 07936 151529 or email hannahpilateshastings@gmail.com
Fridays 10.45- 11.45	Strictly Fitsteps	Fun exercise class. Learn the dances on 'Strictly' without a partner. Contact Amanda on 07768 095184 or at amanda@beacroft.net

*An informal table tennis group often plays on Thursday evenings - contact Jane at janearchutowska@yahoo.co.uk

**The hall has table tennis and badminton equipment and can be booked on an ad hoc basis for £2 per person per hour – contact Rosemarie on 07941 458628 or at rosiero96@icloud.com for details

Winchelsea Church and Town Calendar
July 2024

- Saturday 6th Church Market at St Thomas's - 10.30 till 12
Winchelsea Arts Concert - St Thomas's - 7.30pm
- Sunday 7th** 8am: BCP Holy Communion at Winchelsea
9.30am: Parish Eucharist at Pett
11am: Patronal Festival Eucharist at Winchelsea
Winchelsea Cricket Club home match - 2pm
- Wednesday 10th Second Wednesday Society - New Hall - 2.30pm
- Sunday 14th** 9.30am: Parish Eucharist at Icklesham
10.30am: Sea Sunday Service at Pett Level
11am: Parish Eucharist at Winchelsea
Hymn singing under Wesley's Tree - 2.30pm
- Tuesday 16th Live music at the New Inn - 7pm to 8pm
- Friday 19th Literary Society - Court Hall - 7pm for 7.30
- Saturday 20th Winchelsea Film Night - New Hall - 6.30 for 7.30pm
- Sunday 21st** 9.30am: Parish Eucharist at Pett
11am: Parish Eucharist at Winchelsea
Winchelsea Cricket Club home match - 1.30pm
- Tuesday 23rd Garden Society outing
- Friday 26th Fellowship Lunch - WB Community Hall - 12.30 for 1pm
- Saturday 27th A Night at the Races - New Hall - 6.30 for 7
- Sunday 28th** 9.30am: Parish Eucharist at Icklesham
11am: Parish Eucharist at Winchelsea
- Wednesday 31st Christmas Windows EGM - Court Hall - 7pm
- Thurs 1st Aug Open Air Theatre - School Field - 7.30pm
- Sat 3rd Aug Church Market at St Thomas's - 10.30 till 12
Summer Dance - W B Community Hall - 7.30pm
- Sun 4th Aug** 8am: BCP Holy Communion at Winchelsea
9.30am: Parish Eucharist at Pett
11am: Parish Eucharist at Winchelsea

Further ahead

- Sat 10th Aug Winchelsea Summer Fete
- Sat 24 - Mon 26 Aug Millennium Artefacts Art Exhibition
- Sat 24th Aug Garden Society Summer Show



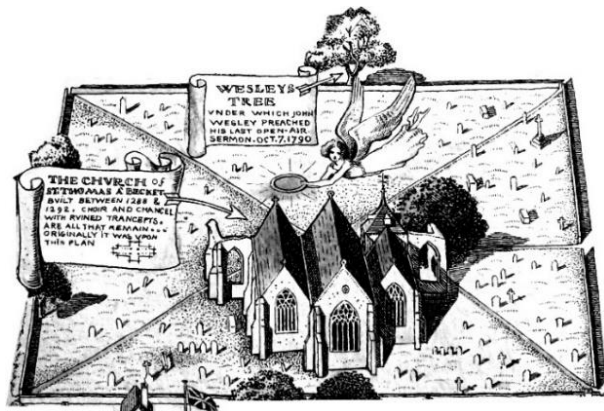
**Please send copy for the August Magazine to
ryeview@gmail.com
before Monday 30th July**

For Winchelsea Beach information go to
winchelseabeachcommunityassociation.co.uk

For Winchelsea information go to
winchelsea.com

For more information about the Church go to
winchelsea-icklesham-churches.org.uk

For weekly news from the local area go to
ryenews.org.uk



Rector of Winchelsea and Icklesham and Priest in Charge of Pett

The Revd Jonathan Meyer
The Rectory, St Thomas Street, Winchelsea TN36 4EB
01797 226254 revdjonathan@btinternet.com
The Rector's day off is Monday

Churchwardens

Celia King
Stargazer, Morlais Place TN36 4LG
01797 227858 kingcelia54@gmail.com

Nigel Ashton
Winchelsea Cottage, High Street TN36 4EA
01797 222023 nigelmarkashton@gmail.com

St Thomas' Primary School

Headteacher Carol Gardiner
Friars Road TN36 4ED 01797 226479
office@st-thomas-winchelsea.e-sussex.sch.uk

Friends of Winchelsea Church

Chairman Ben Chishick
Tower Cottage, Barrack Square TN36 4EA
01797 226653 towercottage@btinternet.com

Parish Magazine

Editor David Page
4 Kent Close TN36 4EX
01797 226524 ryeview@gmail.com